



**TEMPORARY & PERMANENT SOLUTIONS  
FACADE ACCESS EQUIPMENTS**



HOTEL

# Welcome To BATCO

**Engineers, mechanics, electricians, welders, maintenance technicians, administrative staff and professionals with an extensive experience in the access solutions business are the best guarantee of service and attention to our customers.**

BATCO is more than a Trading & Contracting company; we are your partner in realizing your dreams. With a legacy of excellence spanning many years, we have been at the forefront of crafting innovative, high-quality, and sustainable Access & lifting solutions.

Our commitment to precision, integrity, and client satisfaction is the cornerstone of our success. As you explore our company profile, you'll discover the passion, expertise, and dedication that drive us to deliver exceptional results in the world of Access Solution. Thank you for considering us as your construction partner. We look forward to the opportunity to collaborate with you and turn your vision into a reality.

# Table of Contents

---

About Us	04
Our values , Health & safety	05
Our Mission	06
Our Vision & Quality Policy	07
Our Products	08
Roof Mounted Machine	10
Monorail System	14
Davit System	18
Self Powered Cradle	20
Gantry System	22
MEWP Equipment's	23
Fall Protection System	24
Abseiling Rope Access System	26
Temporary Suspended Platform	28
Material Lifting Equipment's	31
Tower Crane	32
Construction Hoist	36
OverHead Cranes & Hoist	40
Vaccum Glass Lifter	42
Chute System	44
Facade Lighting & technology	48
Our Services	50
Maintenance Service	51
External Facade Cleaning	52
Steel Work - Fabrication	54
Lifting Equipment's - Rental	55
Facade Maintenance	56
Training & Certification	57
Access Engineering	58
Our Projects	60
Our Clients	80
Letters from Clients	82
Exhibitions	84
Our Team	85

# About Us

**BATCO with more than 15 years' experience in Building Access Solutions, and present in a Saudi Arabia Market. and with prestigious and important references around the KSA.**

BATCO is more than a Trading & Contracting company; we are your partner in realizing your dreams. With a legacy of excellence spanning many years, we have been at the forefront of crafting innovative, high-quality, and sustainable Access & lifting solutions.

Our commitment to precision, integrity, and client satisfaction is the cornerstone of our success. As you explore our company profile, you'll discover the passion, expertise, and dedication that drive us to deliver exceptional results in the world of Access Solution.



## WE WORK FOR YOU

BATCO experienced management team has introduced invaluable and innovative ideas to the business through their individual commercial and technical expertise. The company consistently proves that it is at the leading edge of the business spectrum particularly at this challenging period of

change to give the customer best quality with best price. With far-vision targets and a portfolio that aims to keep the pace with client demands, BATCO is escalating the market and concentrating its efforts on up-to-date technology and bigger capacity access system

# Our Values

We will conduct our business at all times with integrity, transparency, strong ethical values and a commitment to serve. We will abide by the laws of the land. We believe that the most important asset of this company is its employees. Trust, respect, fairness and dignity shall be how we treat each other within the spirit of working together.

Our mission to achieve the objectives of our vision is through continual assessment, development, and improvement of all our staff, facilities, and technologies by internal investment in people, continual improvement of procedures, and encouraging innovation and providing the technologies to nurture and support progression



## Health and Safety

Our general policy in regards to Health & Safety is based on the following principles:

- Provide Adequate Control Of The Health And Safety Risks Arising From Our Work Activities.
- Consult With Our Employees On Matters Affecting Their Health And Safety.
- Provide And Maintain Safe Plant And Equipment.
- Ensure Safe Handling And Use Of Substances.
- Provide Information, Instruction And Supervision For Employees.
- Ensure All Employees Are Competent To Do Their Tasks And Give Them Adequate Training.
- Prevent Accidents And Cases Of Work-Related Ill Health.
- Maintain Safe And Healthy Working Conditions.
- Review And Revise This Policy As Necessary At Regular Intervals.

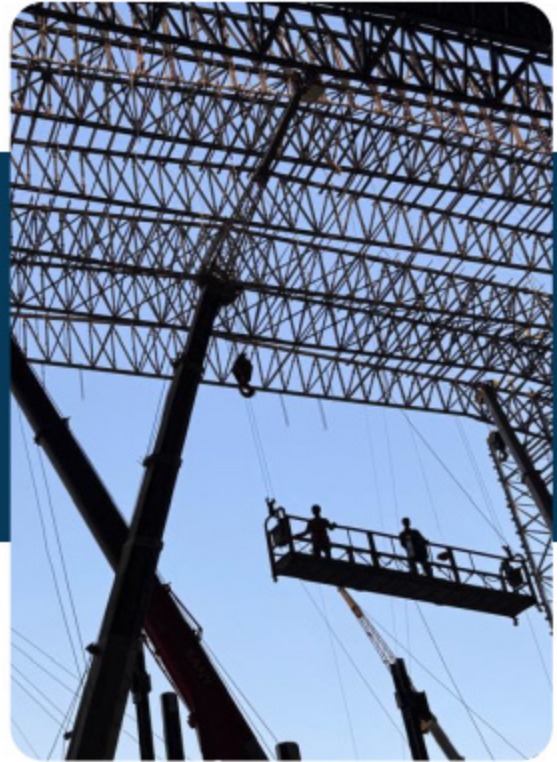
# Our Mission

Our Mission to achieve the objectives of our vision is through continual development, serve forward-looking clients with superior safety solutions and world class service ,and building successful long-term relationships with all our clients,and improvement of all our staff facilities,and technologies by internal investment in people,continual improvement of procedures,and encouraging innovation and providing the technologies to nurture and support progression.

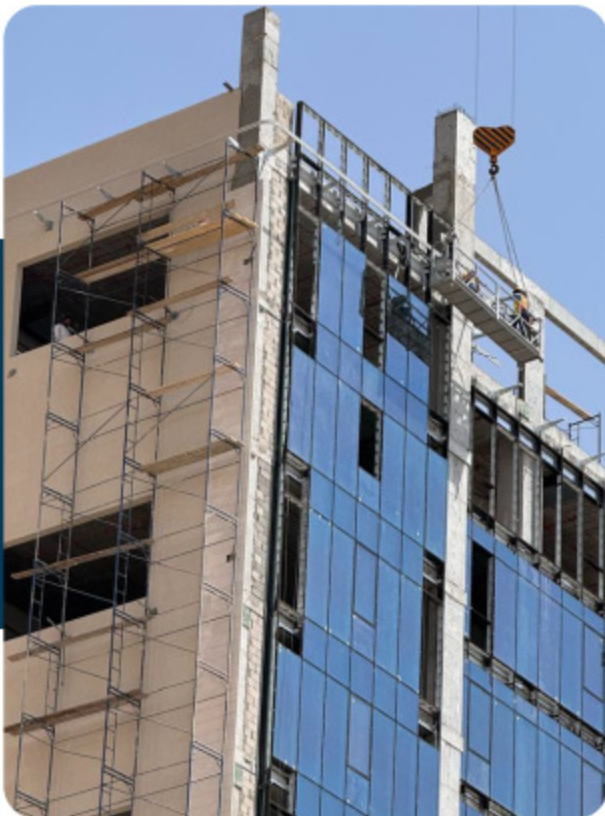


# Our Vision

Conduct our business at all times with integrity, transparency, strong ethical values and commitment to serve. To be the leader and school of this type of business and more in the world.

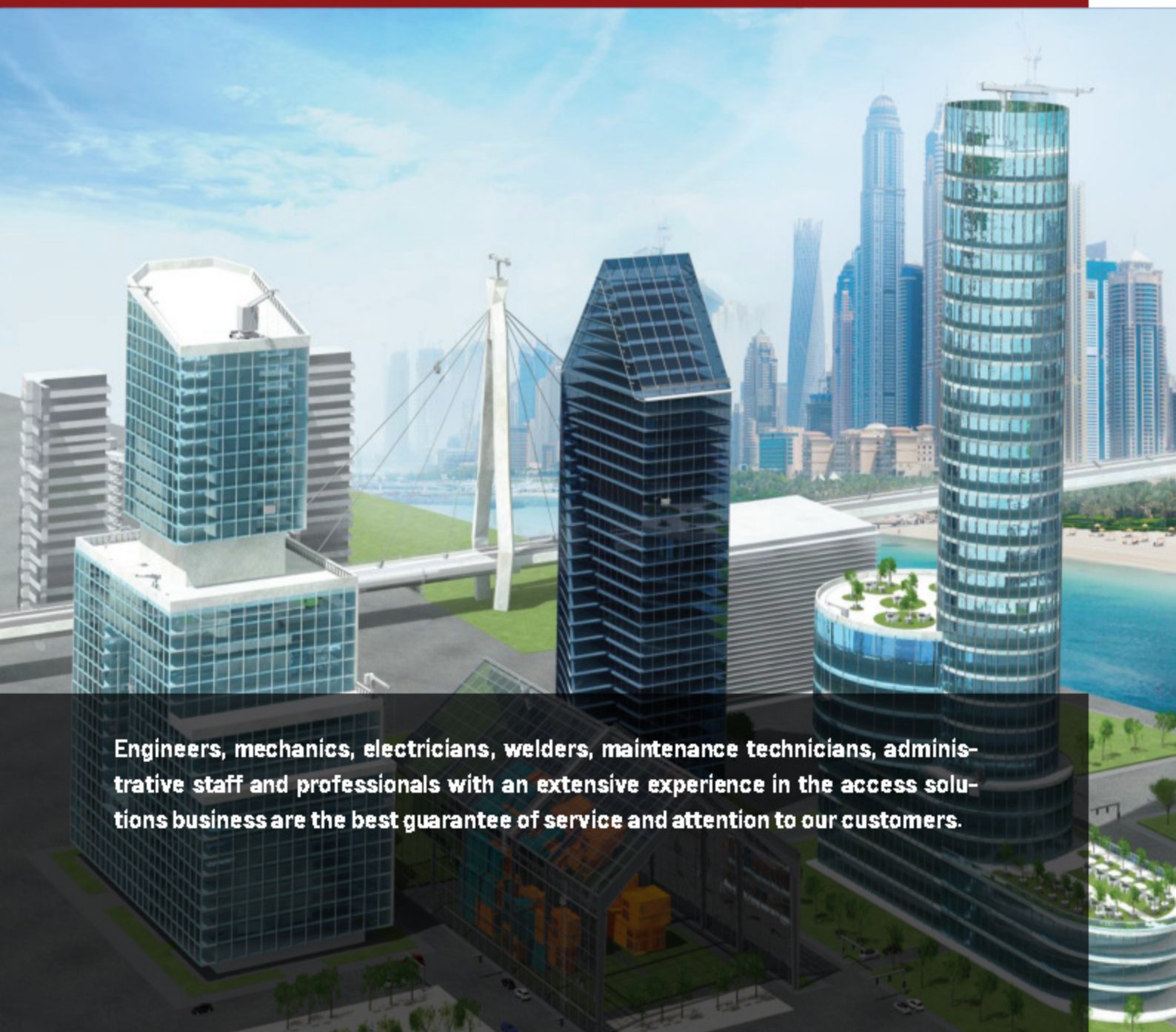


# Our Quality Policy



Take Personal Responsibility to deliver our products and services right the first time, on time, every time, Satisfy Customers, Comply with Requirements, and Continually Improve our organizational capabilities, processes, and systems.

# Our Products



Engineers, mechanics, electricians, welders, maintenance technicians, administrative staff and professionals with an extensive experience in the access solutions business are the best guarantee of service and attention to our customers.





## BATCO Products

01 **BMU - ROOF MOUNTED MACHINE**

02 **MONORAIL SYSTEM**

03 **DAVIT SYSTEM**

04 **SELF POWERED CRADLE**

05 **GANTRY SYSTEM**

06 **MEWP - EQUIPMENTS**

07 **FALL PROTECTION SYSTEM**

08 **ABSEILING ROPE ACCESS SYSTEM**

09 **SUSPENDED PLATFORM CRADLE**

10 **MOBILE MATERIAL LIFTING**

11 **TOWER CRANE**

12 **CONSTRUCTION HOIST**

13 **OVERHEAD CRANES & HOIST**

14 **VACCUM GLASS LIFTER**

15 **CHUTE SYSTEM**

16 **LED FACADE LIGHTING**

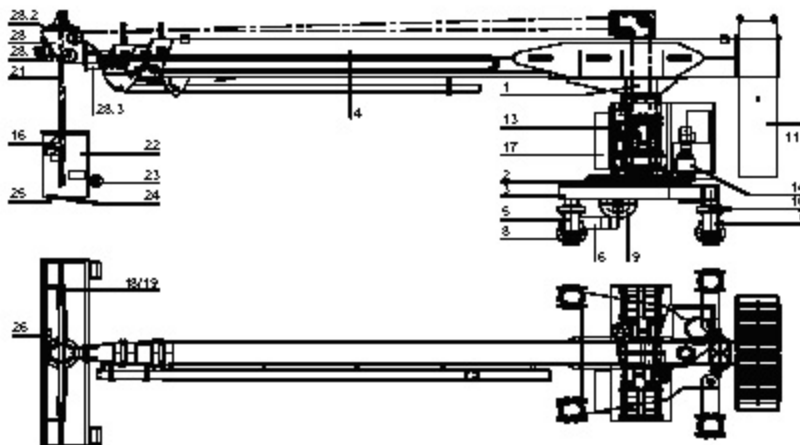
## 01 BMU - ROOF MOUNTED MACHINE

A Building Maintenance Unit - BMU - is a mechanical and electronic crane suspended from the roof, which moves systematically over a structure while carrying human window washers or any other specialist for the maintenance of the facade. The suspended structure is a working platform of 2m or more by means of a multi-layer drum-hoist and 4 independent wire ropes. Additionally, the BMU can be equipped with an auxiliary hoist for glass changing and other heavy duty maintenance works. BMU is made of standardized components in a customized way to ensure that all facades of the building can be reached and maintained/cleaned. Until today, BMUs with outreach of more than 30m have been produced and installed



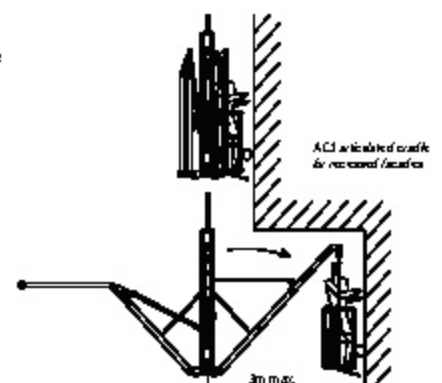
## Best system to cover the- whole perimeter of a building

The design of the machine and its components are calculated with latest generation software and tested according to both European – EN1808 and Machine Directive 2006/42/CEE – and North American standards



### 5. MAIN COMPONENTS OF A SPECIAL SCORPIO MACHINE (see figure 3)

- |   |                                     |
|---|-------------------------------------|
| 1. Mast   | 17. Trolley control box             |
| 2. Powered slewing ring                           | 18. Upper limit safety device       |
| 3. Traversing trolley                             | 19. FINAL upper limit safety device |
| 4. Jib  | 21. Suspension rope                 |
| 5. Powered roller frame                           | 22. Cradle                          |
| 6. Geared motor with brake                        | 23. Support roller                  |
| 7. Rear roller frame (not powered)                | 24. Anti-collision bar              |
| 8. Guidewheel                                     | 25. Swivel castor                   |
| 9. Reel for power supply cable                    | 26. Cradle control box              |
| 10. Guide for power supply cable                  | 28. Side beam                       |
| 11. Counterweight                                 | 28.1 Side beam motor                |
| 13. TWIN-TIRAK hoist with double wire rope reeler | 28.2 Spreader bar slewing ring      |
| 14. Geared slewing motor                          | 28.3 Spreader bar arm               |
| 16. Overload limit device                         |                                     |



**A OPTIONS AVAILABLE FOR BMU**

Depending on your building needs, BMUs can be modified with different mounting options, parking systems, machine movements, cradles, and façade restraints:

**CRADLES**

The cradle (also known as the platform, scaffold, cage, or gondola) is the 'basket' in which the operator stand to access the façade. Cradle design can vary to match the requirements of the façade. Cradles can be provided in lengths as short as 1.5 metres and as long as 15 metres. They can be wider to provide improved access to small recessed areas in the façade, or can incorporate a range of extendable structures (forward reaching or approaching systems) to allow them to reach into larger recessed areas (up to 6 metres). In order to prevent damage to the façade, a wide range of fixed and adjustable rollers and buffers are available. cradles can also be specified with a wide range of optional extras

**MOUNTING OPTIONS**

- Trackless
- Concrete runway and guided angle
- Free standing twin track
- Twin track, cast in bolts
- Vertical parapet mount

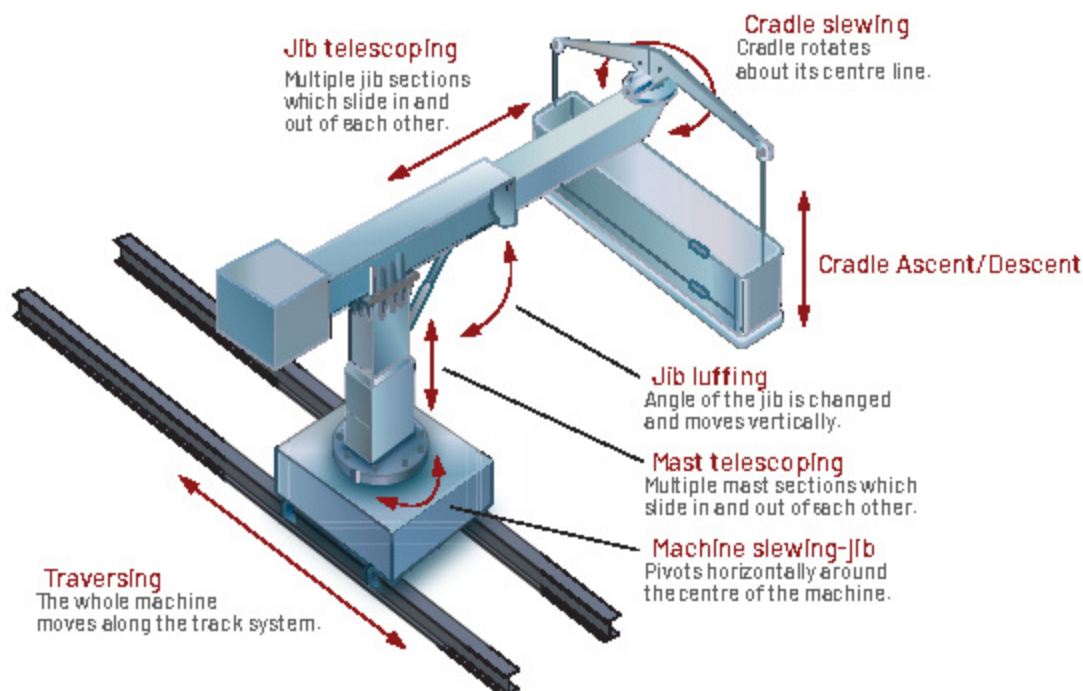
**PARKING SYSTEMS**

- Pantograph systems (mast lowering)
- Pits and lifting tables
- Telescoping (mast lowering)
- Garages

**FACADE RESTRAINT OPTIONS**

- ISA pins with lanyards
- Soft rope system
- Pull in system
- Mullion guides.

These optional features are available for most machines but not all. For further information you can discuss your needs and application with US.

**MACHINE MOVEMENT OPTIONS**


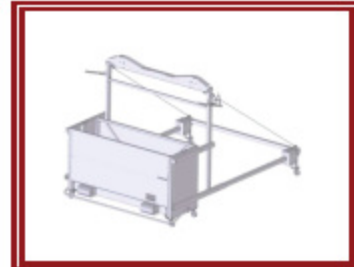
### CRADLE PANTOGRAPH SYSTEM



Hydraulic - Pantograph system



Telescopic - pantograph System

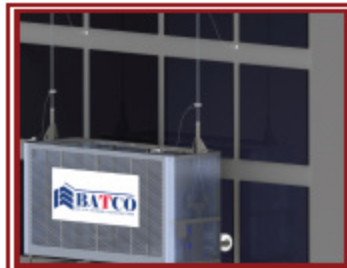


Fixed Base- static system

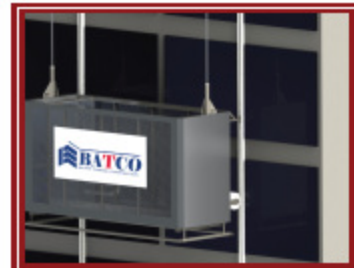
### FACADE RESTRAINT OPTIONS



Restraint system -  
for inclined Facade

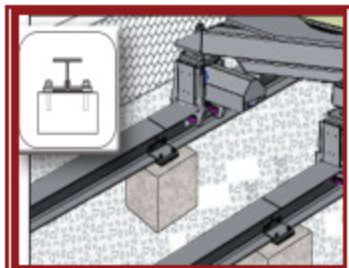


Restraint System - Pin Type

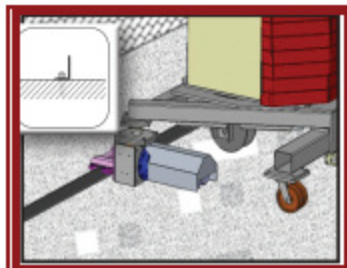


Restraint system -Facade Guide  
rail System

### MOUNTING OPTIONS



Double Rail track fixed to  
concrete or steel post

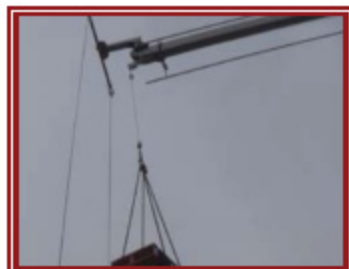


Concrete track with <math>\Delta</math>-  
shaped guide rail



Parapet Mounted Track

### PARKING & HOIST SYSTEM



Auxiliary Hoist  
for Glass & material Lifting



Telescopic Mast



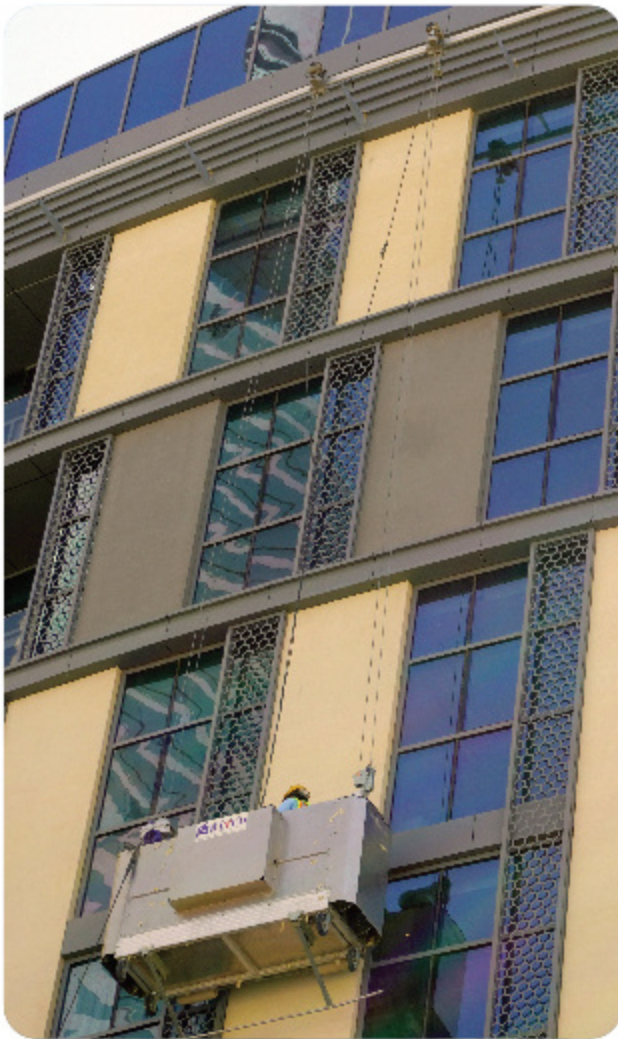
Lifting Table

## 02 MONORAIL SYSTEM

Monorail systems in certain cases offer an excellent alternative to the traditional BMU units. Monorail is by far considered as the most cost effective and efficient window cleaning system in terms of purchase and running cost and having very minimal operation process. BATCO recommends the installation of a custom-made monorail system.



**The BATCO monorail is fixed by custom brackets depending of many parameters. The brackets are either Roof, wall, or ceiling fixed**



**Monorail systems in certain cases offer an excellent alternative to the traditional BMU units. Monorail is by far considered as the most cost-effective and efficient window cleaning system in terms of purchase and running cost and having very minimal operation process. BATCO recommends the installation of a custom-made monorail system.**

The monorail is combined with powered cradle, the monorail is an extruded aluminum element fixed outside of the building supported by steel bracket anchored to the concrete wall at intervals ranging from 1.5m to 2.5m, and used as a track way for trolleys from which the cradle will be suspended, it allow the cradle to traverse along the façade, these trolleys can be either manual or electric motorized trolley.



**A OPTIONS AVAILABLE FOR MONORAIL SYSTEM**

Monorail systems is by far considered as the most cost-effective and efficient window cleaning system in terms of purchase and running cost and having very minimal operation process.

The simplicity of the system is the monorail can be bended to follow the contour of the building, it can be either face mounted or ceiling mounted, the cradle can be configured to various sizes, and multiple cradle or glass lifting winches can be operated within the same monorail and many other advantages.

It is Facade Cleaning System moving horizontally over aluminum Monorail install at the exterior side of the building.

Operator can control Horizontal and vertical movements from the Control panel inside the cradle.

**1- BRACKET OPTIONS**

- face Mounted
- Ceiling Suspended
- Parapet Mounted
- Floor Mounted
- Special Designed

**2- TRACK OPTIONS**

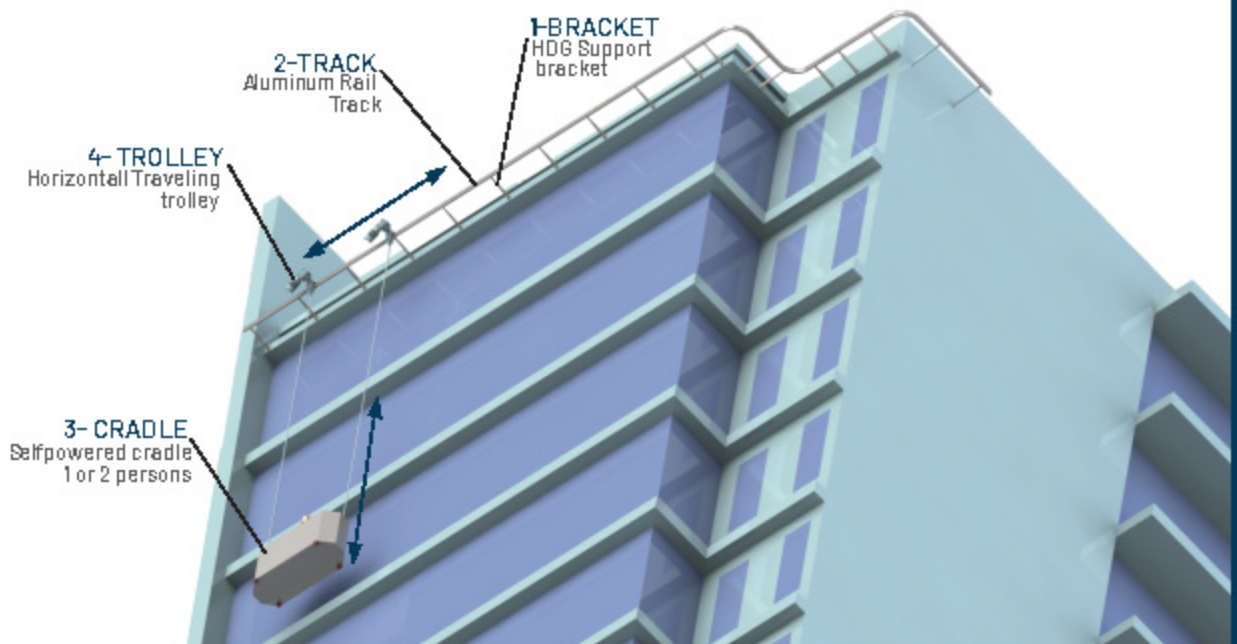
- Face Mounted
- Climbing
- Under Ceiling

**3- CRADLE OPTIONS**

- 2 Persons (Swl 240kg)
- 1 person (Swl 120kg)
- Pantograph Cradle (Recess Area)
- Special Design (According to site)

**4- TROLLEY OPTIONS**

- Electrical Motorized
- Electrical Motorized - Climbing
- Manual
- Abseiling Trolley

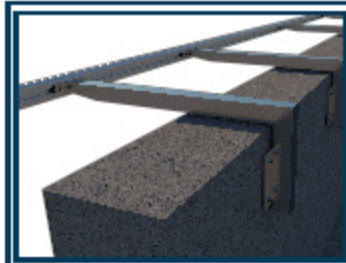




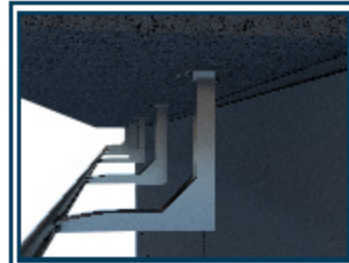
### SUPPORT BRACKET OPTIONS



Face Mounted Bracket



Parapet Mounted Bracket



Ceiling Mounted Bracket

### TRACK OPTIONS



Face Monorail Track



Climbing Monorail Track



Under Ceiling Monorail Track

### SELFPOWERED CRADLE OPTIONS



2 persons SelfPowered cradle



Single persons SelfPowered cradle

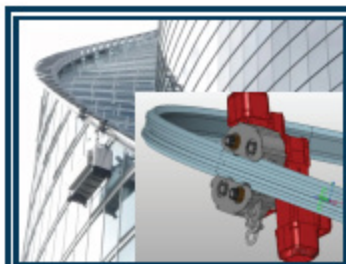


Special Selfpowered Cradle  
Depend on the Site Requirements

### TROLLEY OPTIONS



Electric Motorized Trolley



CLIMBING  
Electric Motorized Trolley



Manual Trolley

### 03 DAVIT SYSTEM



A davit system consists of two primary components, a base and an arm. The base is a permanent fixture to the building structure and the arm is typically portable with the ability to be raised, lowered and removed. In most cases a davit system will be used to rig a Powered Platform; however, a davit system can be used with other forms of suspended equipment such as a single cage or a bosun's chair.





## FEATURES OF DAVIT SYSTEM

- It is most effective when a building design has multiple levels.
- Davits are an efficient, safe and practical permanent suspension system when utilized with the self-powered platform.
- It is most widely used on a multi-leveled structure.
- Portable, one Davit can service numerous socket locations.
- Davit arm will swivel and can be removed from the base.
- Built to meet the highest health and safety standards.
- Proof loaded, tested and certified for man riding and materials.
- Confined Space applications, Industrial Access & Rescue Applications.

**04 SELF POWERED CRADLE**

BMU Cradle (Permanent Installation/ Building Maintenance Unit) is designed to provide efficient working access for permanent installations in many types of buildings and structures. BMU cradles use for monorails and roof cars and has been applied in various permanent installations. The BMU Cradle is equipped with aluminum cladding and all the necessary safety features to guarantee worker safety. With the choice between Safety Lock the safety features are adaptable to every situation. Wire winders for steel cable storage ensure that the cradle can be used safely in areas where no free hanging ropes are allowed.

## TECHNICAL SPECIFICATIONS

BATCO - BC-02 cradle has been developed for a wide range of permanent suspended access applications. Its design meets our customers' requirements. The equipment is intended to lift operators to their work place at height in order to carry out window cleaning or facade maintenance, painting or decoration work, refurbishing, jointing, repairs, etc



Model	BC-02
Cradle Size Lxwxh	2500x690x1500 mm
Dead Weight	350 kg
Safe Working Load	240 kg
max allowed Persons	2
wire Rope	8.3mm
Number of ropes	4
Cradel Finishing	Aluminum Cladding
Power Supply	3 phase 380v 60Hz 32A
drum	Twin Drum Wire Winders
Control Box	inside Cradle
No of Hoist	2
Hoist Power	1.5 kw
Lifting Speed	10m/min
Brake System	electromagnetic Brake
primary Brake	Block Stop
control for Trolley	yes, optional
Foot Step	both Side

## 05 GANTRY SYSTEM

GANTRIES are Taylor-made according to the project requirements and designed for one or more workers. The width and length is determined by the specifics of each Project. As well as the incorporation of manual or motorized traversing systems Types of finishes includes galvanized steel or aluminum and other many other components as required. Giving solutions to any type of skylight.



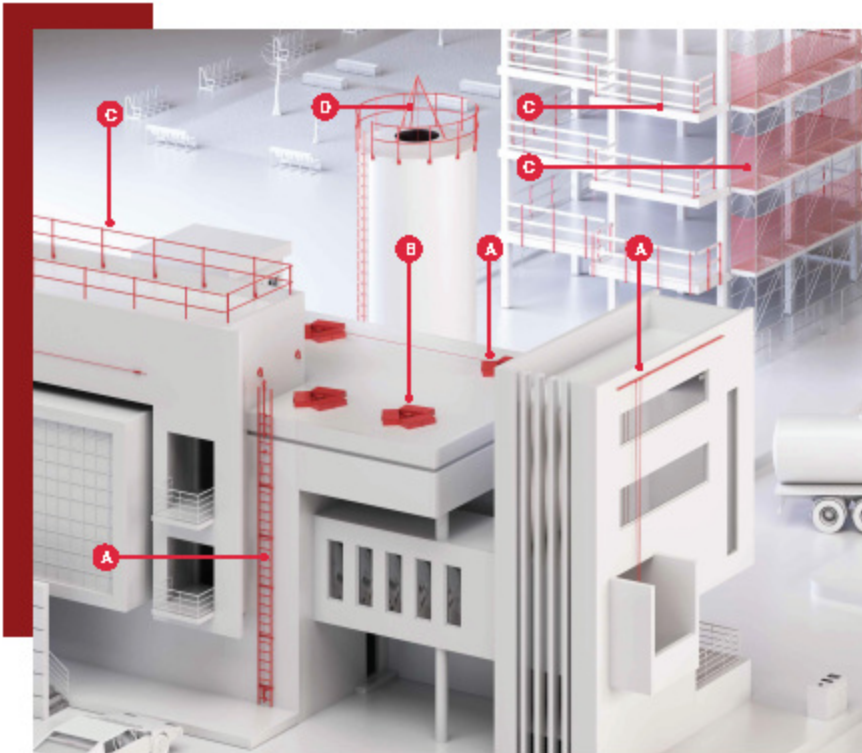
## 06 MEWP EQUIPMENT'S



Working safely at heights is only possible when your machines are safe. As a supplier of solutions in aerial work platforms, BATCO offers a maintenance service. BATCO offers two types of maintenance: a basic contract and an extended contract. It is possible to contract for a longer period, up to five years. If desired this could include maintenance, repair, spare parts, call out, a number of malfunctions per year and a replacing machine. The price of your contract depends on the age and type of your machine. Excluded from a maintenance agreement are batteries, chargers, tires and relays.



## 07 FALL PROTECTION SYSTEM



### A LIFE LINE & RAIL SYSTEM

Our lifeline systems meet every design requirement: rope or rail, fixed or temporary, horizontal or vertical, and offer the possibility of securing up to 4 operators at the same time

### B ANCHOR POINT

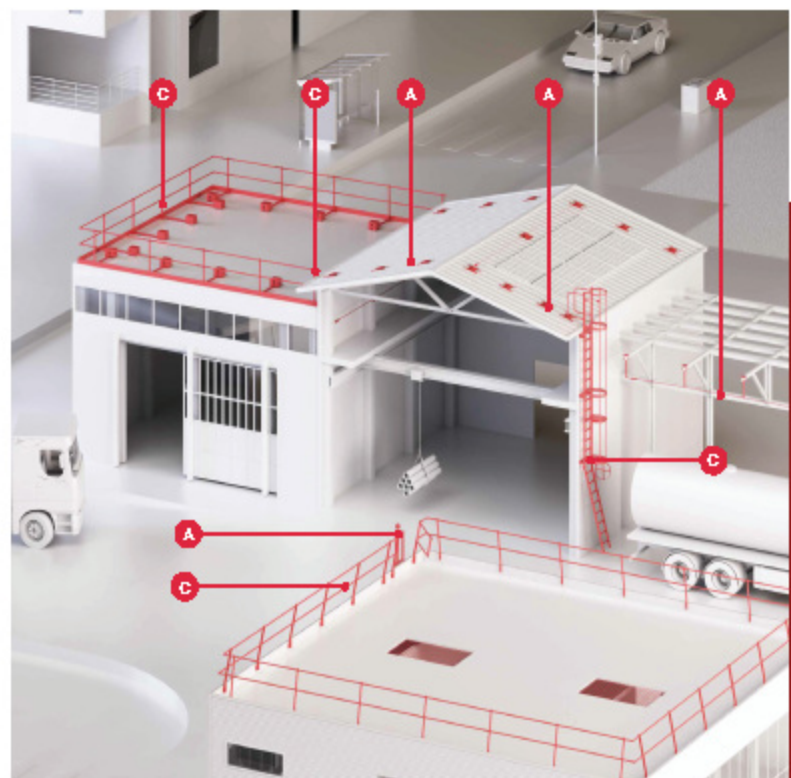
Anchor points are the alternative or complement to lifelines. Those in the Solutions for Safety range are designed to meet different construction requirements and to adapt to substrates made of various materials

### C COLLECTIVE PROTECTION

Collective Protective Equipment (CPE) include all temporary or permanent devices designed to protect more than one operator from the risk of falling. These include, for example, railings, textile and metal nets, ladders with and without cages, steps and other types of protection

### D PERSONAL PROTECTIVE EQUIPMENT

Personal Protective Equipment (PPE) includes any type of equipment designed to be worn or used by the workers in order to protect them from risks that could threaten their safety while carrying out operations at height

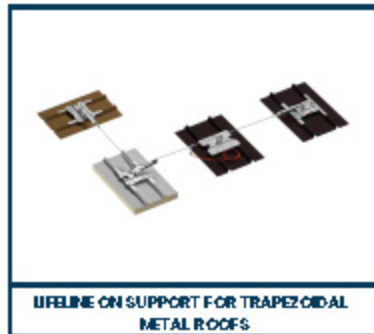




Working safely at heights is only possible when your machines are safe. As a supplier of solutions in aerial work platforms, BATCO offers a maintenance service. BATCO offers two types of maintenance: a basic contract and an extended contract. It is possible to contract for a longer period, up to five years. If desired this could include maintenance, repair, spare parts, call out, a number of malfunctions per year and a replacing machine. The price of your contract depends on the age and type of your machine. Excluded from a maintenance agreement are batteries, chargers, tires and relays.



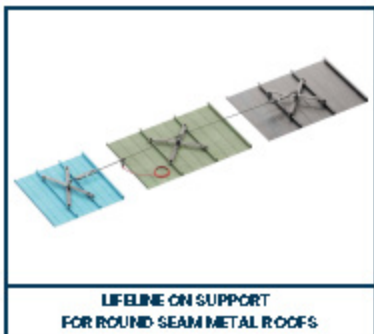
LIFELINE ON SUPPORT FOR TIMBER, CONCRETE AND STEEL ROOFS



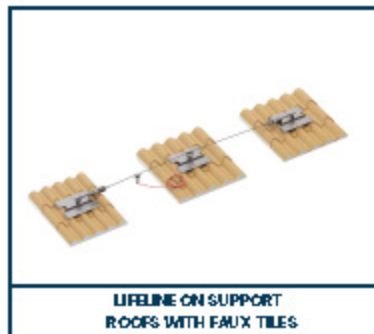
LIFELINE ON SUPPORT FOR TRAPEZOIDAL METAL ROOFS



LIFELINE ON SUPPORT FOR STANDING SEAM METAL ROOFS



LIFELINE ON SUPPORT FOR ROUND SEAM METAL ROOFS



LIFELINE ON SUPPORT ROOFS WITH FAUX TILES



LIFELINE ON SUPPORT FOR CONTINUOUS ROOFS AND PVC/TPO AND CSB ROOFS



LIFELINE ON SUPPORT WITH BALLAST FOR FLAT ROOFS



OVERHEAD LIFELINE ON STEEL AND CONCRETE



WALL-MOUNTED LIFELINE ON STEEL AND CONCRETE



VERTICAL LIFELINE FOR LADDER ATTACHED



ANCHOR POINT



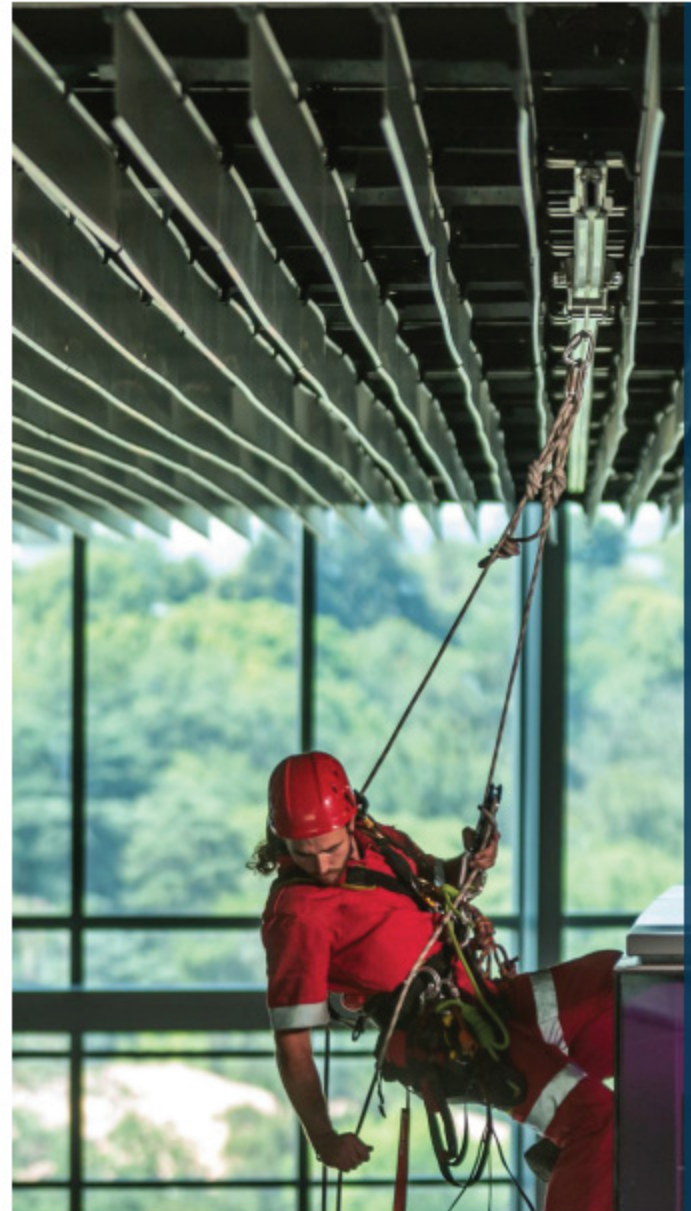
GUIDE RAIL

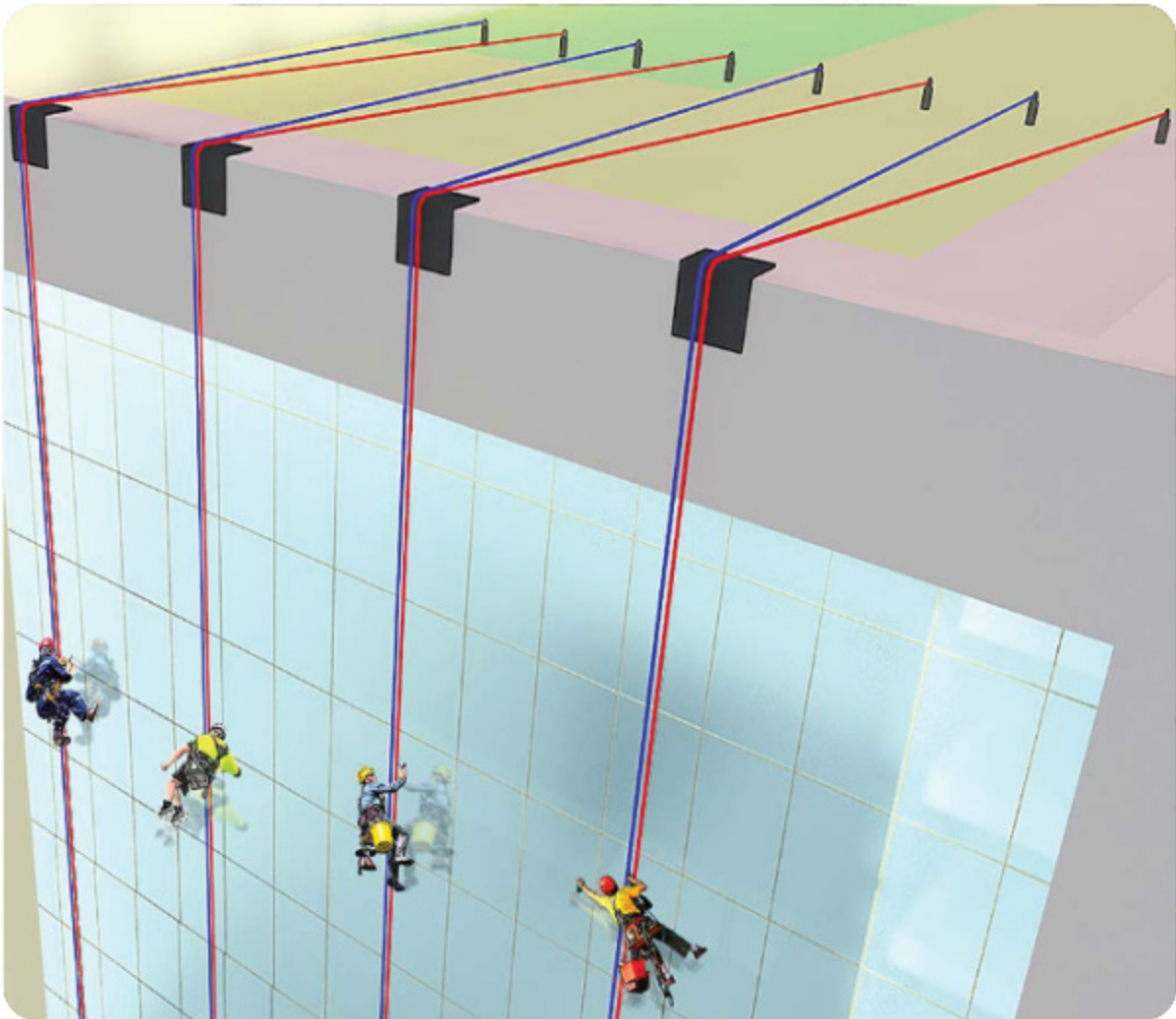
## 08 ABSEILING SYSTEM - ROPE ACCESS

### A ROPE ACCESS RAIL

The Rope Access Rail system is designed for use as an adjustable anchorage point for rope access, rescue and fall arrest. It provides the operator freedom of vertical and horizontal movement at height and also the ability to lock into position while working. The rail system is designed to withstand highly corrosive environments. Access rail is well suited to rescue situations where a user becomes incapacitated and a rescue team needs to reach the victim. If additional trolleys are kept at both ends of the rail, rescuers would have quicker access than having to do rope transfers or lanyard systems

Lightweight trolleys are constructed of strong, solid aluminum. Teflon ball bearings handle high loads, reducing friction so the trolley moves smoothly along the rail. The adjustable pinstop allows trolleys to be moved along the rail and locked into a new location. The Harken Safety & Rescue 27 mm Access Rail system can be used for human suspension. The rails are independently tested, CE compliant under EN795.2012 Type D, meet ANSI Z359, and are OSHA compliant. The trolleys are independently tested, CE certified under EN795.2012 Type B, meet ANSI Z359, and are OSHA compliant



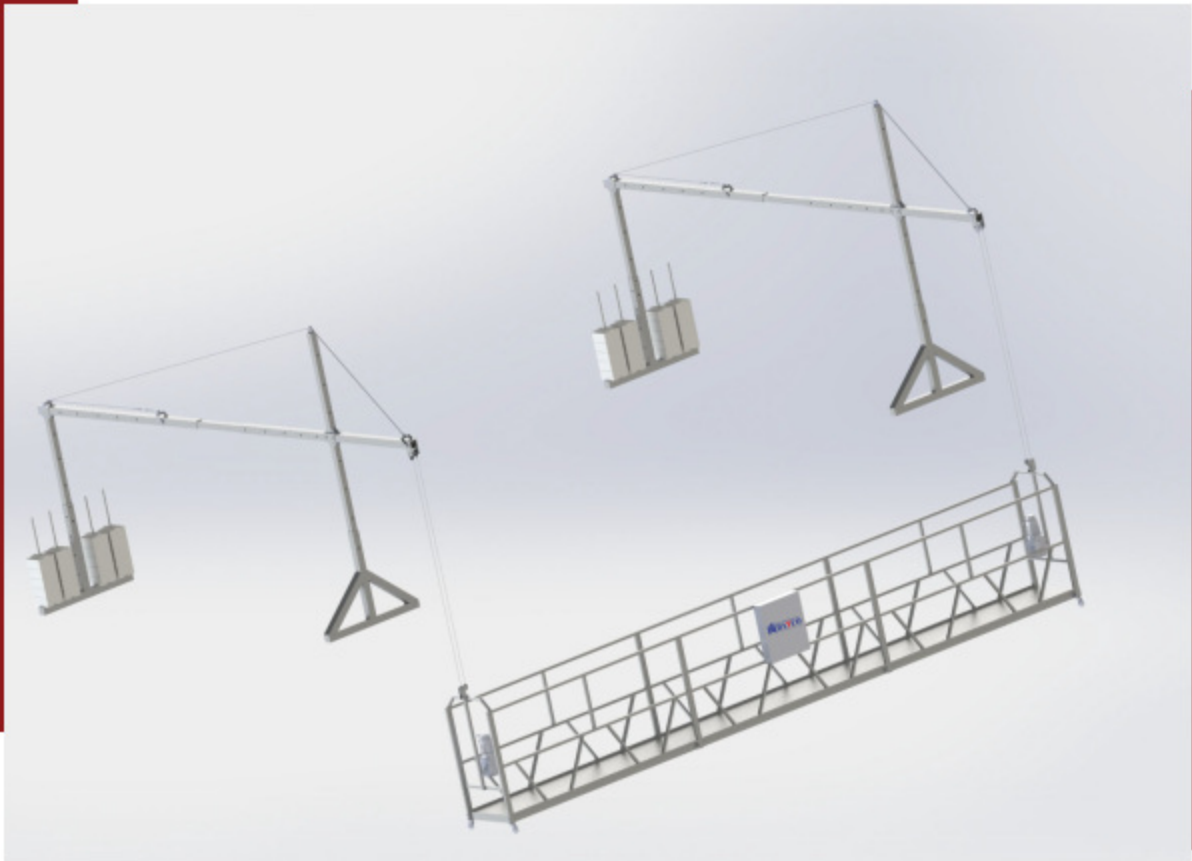
**B ROPE ACCESS ANCHOR**

**Rope access technique is all together a completely different concept working based on IRATA guides lines**

**The suspension point for the rope access operators can be from a permanent eye-bolt anchors, installed at the roof or mechanical level. The anchors spacing should be at every 2000mm. Each anchor points must be rated to 15kN (1.5 ton) to comply with health and safety regulations and must be conformant to EN795 and installed according to BS7883. Each individual eyebolt must be rated to 15kN.**

**we BATCO have expertise in a range of façade access systems, and we can advise on the best system for your situation, as well as designing, installing and maintaining the abseil system and anchor points to BS8810**

## 09 TEMPORARY SUSPENDED PLATFORM



It takes men and materials up to the ideal working height to get the job done (Painting, welding, chimneys maintenance, bridge construction etc.) correctly and efficiently done

- 🏠 Time saving and cost saving alternative to tubular scaffolding.
- 🏠 Unlimited working height
- 🏠 Quick and easy to assemble and install
- 🏠 Light weight and easy to transport
- 🏠 Motorized traction hoists and controls
- 🏠 Steel wire ropes attached to a roof suspension system



## TEMPORARY SUSPENDED PLATFORM

*The main parameters of ZLP series suspended platform*

Type	ZLP1000	ZLP800	ZLP630	ZLP500	ZLP250
Rated Load	1000 kg	800 kg	630 kg	500 kg	250 kg
Lifting Speed	8.7m/min	9.0m/min	9.0m/min	9.0m/min	9.0m/min
Voltage-3phase	380V(415V/220V)	380V(415V/220V)	380V(415V/220V)	380V(415V/220V)	380V(415V/220V)
Frequency	50Hz/60Hz	50Hz/60Hz	50Hz/60Hz	50Hz/60Hz	50Hz/60Hz
Rated Power	2.0×2	1.8×2	1.5×2	1.1×2	1.1×1
Hoist Model	LTD100	LTD80	LTD63	LTD50	LTD50
Safety Lock Model	LSF310	LSF309	LSF308	LSF308	OSL308
Dia. of Wire Rope	4×315W+FC-10.2mm	4×315W+FC-9.1mm	4×315W+FC-8.3mm	4×315W+FC-8.3mm	4×315W+FC-8.3mm
Platform Size (L×W×H)	(2.5×3)×0.76×1.45M	(2.5×3)×0.76×1.45M	(2×3)×0.76×1.45M	(2.5×2)×0.76×1.45M	1.2×0.65×2.3M
Weight of Suspension Jibs	340kg	340kg	340kg	340kg	170kg
Weight Of Lifting Part	520kg(Steel)	520kg(Steel)	460kg(Steel)	410kg(Steel)	200kg(Steel)
	340kg(Aluminum)	340kg(Aluminum)	310kg(Aluminum)	290kg(Aluminum)	140kg(Aluminum)
Counter Weight	1200kg	1000kg	900kg	800kg	350kg

 The weight of lifting part includes platform, hoist, safety locks and electric control system.



**NON STANDARD SUSPENDED PLATFORM**



**CURVED PLATFORM**



**CORNER PLATFORM**



**CIRCLE PLATFORM**



**ELEVATOR PLATFORM**

## 10 MOBILE MATERIAL LIFTING SYSTEM



It takes materials up to the ideal working height and move horizontally

- ▣ Compact and reasonable design, collecting wire rope device is driven directly by hoist
- ▣ Limit switch for vertical lifting & horizontal moving, end of wire rope sensor and no power descent in case of power failure
- ▣ Movable suspension jib with cast wheels is fitted with outrigger ensure its stability
- ▣ Wireless controller and mechanic overload sensor (Option)
- ▣ Castor wheels to allow easier movement. (Option)

Model	MH601	MH501	MH801	MH101
Rate load (kg)	630	500	800	1000
Lifting Speed (m/min)	18	18	18	14.5
Wire Rope Dia.(mm)	8.3			
Suspension Point	1000-2000			
Extension Length (mm)	1000-2000			
Maximum Lifting Height (m)	150			
Pushrod Flex Length (mm)	1500			
Pushrod Flex Speed (mm/s)	50			
Pushrod Motor Power (kW)	1.1			

▣ voltage and frequency is available upon request.

## 11 TOWER CRANE

We are specialized in Supply & Installation of Tower Cranes in all over Saudi Arabia, our Cranes have been Widely Installed in many project whose payload capacity is as much as Required , and the erection height ,







BATCO tower Cranes Hire & Sales, we offer you rack and pinion Tower Cranes with Best Maintenance services.. looking for a specific Crane type or want advice from an experienced crane specialist. Contact us.



**A LIFE LINE & RAIL SYSTEM**

BATCO has range of new and used Potain cranes in stock The crane rental service is the core business of the group with tower cranes ranging from 4Ton to 80Ton. We continue to invest highly in new technology cranes to serve our customers efficiently.

BATCO has all types of tower cranes in its fleet, available to suit all lifting needs.

**LUFFING TOWER CRANE****HAMMERHEAD - TOWER CRANE****FLAT TOP TOWER CRANE****CURVED PLATFORM**

**B SPARE PARTS SUPPLY**



**L46A1 MAST SECTION**



**L6BB2 MAST SECTION**



**L6BB1 MAST SECTION**



**L6BA1 MAST SECTION**



**L66A2 MAST SECTION**



**ANCHORAGE FRAME**



**FIXING ANGLE**



**BLOCKAGE**



**LOADING PLATFORM**



**MAN BASKET**



**CANTILEVER MAN BASKET**



**LOADING PLATFORM**

## 12 Construction Hoist



We are specialized in Supply & Installation of Construction Hoist in all over Saudi Arabia, our building hoist have been Widely Installed in many project and won good reputation, whose payload capacity is as much as 10000kg, lifting speed can reach up to 96m/min, and the erection height reaches up to 550m., our products have been widely used for transportation for both men and cargo in field of general buildings, but also industry, electric power, mining well, oil, chemical industry etc.

### MAIN ADVANTAGE:

- Compact design and comfortable operation environment.
- Single and dual cage configurations. interchangeable.
- Design without counterweight.
- Multiple choices of doors.
- Simple and easy operation system.
- PLC control as an option.
- Durable material: high quality steel for increased strength and weight reduction, hot dip galvanized mast section and tie-in
- Wide range of tie-in.
- Wide range of optional equipment and functions.

**A PASSENGER / MATERIAL HOIST**

**SC SINGLE HOIST**

**SC TWIN HOIST**

S/N	Model		Load Capacity per cage(Kg)	MAX.Speed (m/min)	MAX.Height (m)	Drive Unit (KW/Hz)	Safety Device	EL Control (KW)
	Single	Twin						
1	SC100	SC100/100	1000	33	150	2*11/50	SAJ30-1.2	PLC DOL
※ 2	<b>SC100L</b>	<b>SC100/100L</b>		36	250	2*11/60	SAJ30-1.2	30 VFD
3	SC100M	SC100/100M		60	350	2*15-19/87	SAJ30-1.4	37 VFD
4	SC100H	SC100/100H		75	450	2*23/87	SAJ40-2.0	55 VFD
5	SC100SH	SC100/100SH		96	550	2*32/87	SAJ40-2.0	75 VFD
6	SC200	SC200/200	2000	33	150	3*11/50	SAJ40-1.2	PLC DOL
※ 7	<b>SC200LA</b>	<b>SC200/200LA</b>		36	250	2*13/60	SAJ40-1.2	30 VFD
※ 8	<b>SC200LB</b>	<b>SC200/200LB</b>		45	250	2*15/60	SAJ40-1.2	37 VFD
9	SC200MA	SC200/200MA		54	250	2*19/87	SAJ40-1.4	45 VFD
10	SC200MB	SC200/200MB		60	250	2*23/87	SAJ40-1.4	55 VFD
※ 11	<b>SC200MC</b>	<b>SC200/200MC</b>		63	350	3*15/87	SAJ40-1.4	55 VFD
12	SC200H	SC200/200H		75	450	3*19-23/87	SAJ50-2.0	75-90 VFD
13	SC200SH	SC200/200SH	96	550	3*26-32/87	SAJ50-2.0	90-110 VFD	
14	SC300LA	SC300/300LA	3000	36	250	3*11/60	SAJ50-1.2	37 VFD
※ 15	<b>SC300LB</b>	<b>SC300/300LB</b>		48	250	3*15/87	SAJ50-1.2	55 VFD
16	SC300M	SC300/300M		60	350	3*19-23/87	SAJ50-1.4	75-90 VFD
17	SC300H	SC300/300H		75	450	3*26-32/87	SAJ50-2.0	90-110 VFD

Remarks: The ones marked ※ are our recommended model, others can be customized according to the requirements .

**B MATERIAL HOIST**

## Material Hoist

The material hoists are used to lift material vertically in construction and rehabilitation works and are characterized by their comfort for transport and the speed and simplicity of assembly



## Double Mast Material Hoist

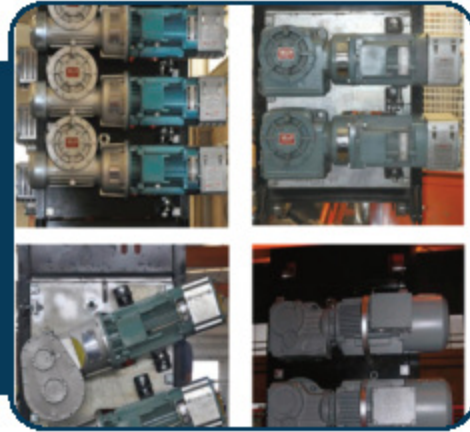
OPTIMAL SOLUTION FOR TRANSPORTING LARGE LOAD VOLUMES FOR CONSTRUCTION

The Double Mast material hoists hoist is made up of a wide and versatile platform with 2 masts that work by means of a cardan system transmission of assembly

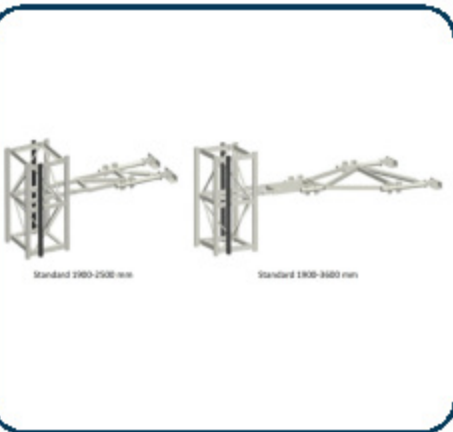
**C** OPTIONS AVAILABLE



**CAGE OPTIONS**



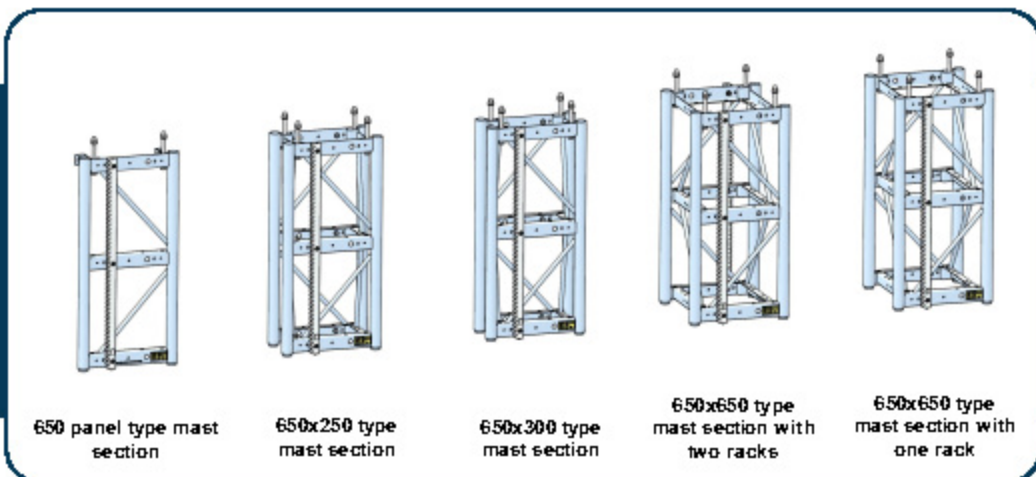
**DRIVE OPTIONS**



**WALL TIE OPTIONS**



**INDUSTRIAL OPTIONS**



650 panel type mast section

650x250 type mast section

650x300 type mast section

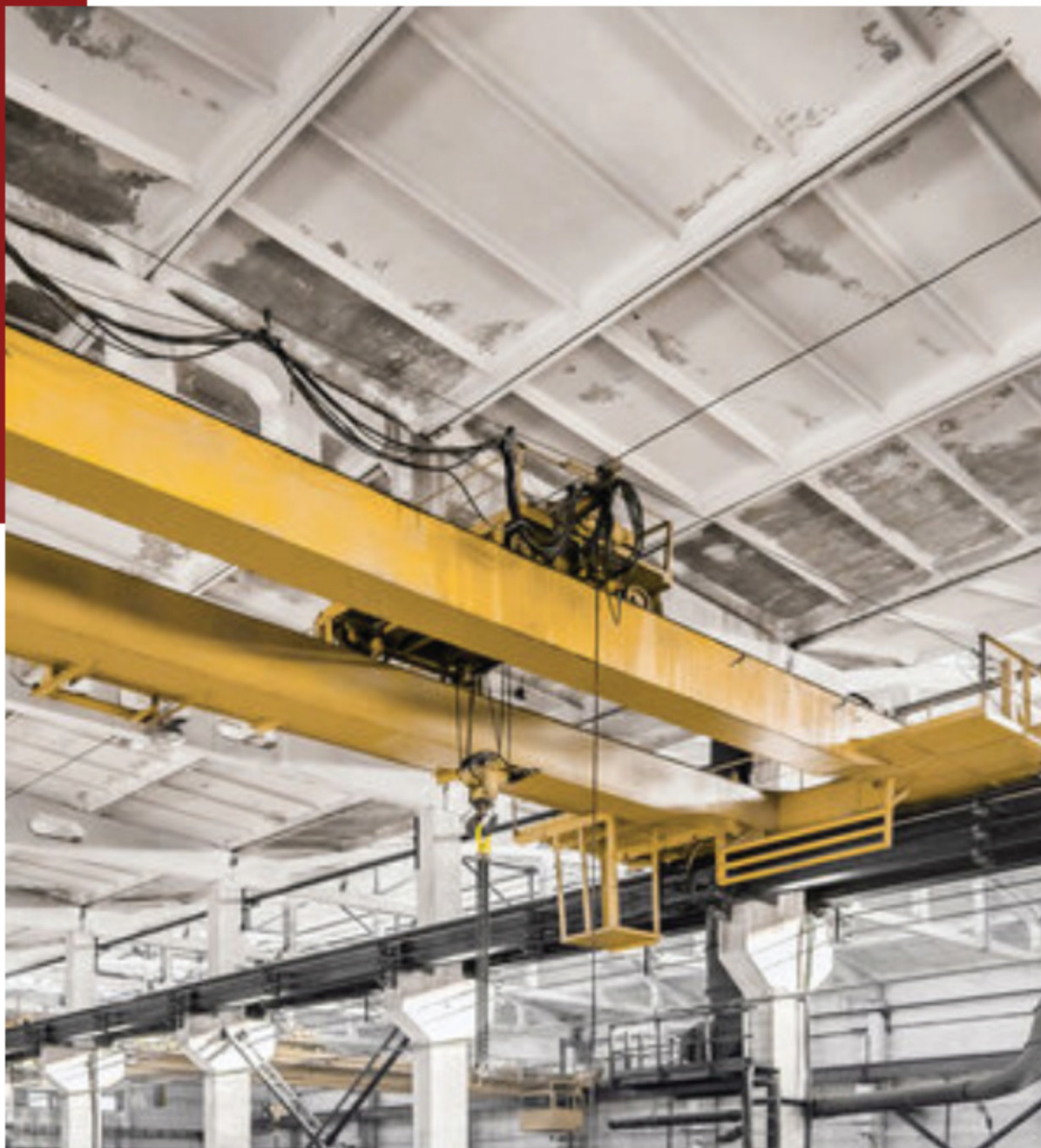
650x650 type mast section with two racks

650x650 type mast section with one rack

**MAST OPTIONS**

## 13 OVERHEAD CRANE & HOIST

BATCO started to serve in Saudi Arabia crane sector since 2012. we have carried out various projects in the KSA. We are leading these innovations with many of our projects by closely following the innovations in the sector. With our experienced team and expert staff, we produce high efficiency lifting and handling equipment in accordance with international norms by making our productions without sacrificing quality. Keeping the customer satisfaction high is the basic principle of our quality policy, and gaining customers is the basic principle of our company





**A DOUBLE GIRDER**


CAPACITY (ton)	WIRE DIAMETER (mm)	ROPE REEVING	LIFTING SPEED (m/min)	LIFTING MOTOR POWER (kW)	FEM	D.O	TROLLEY TRAVELLING SPEED (m/min)	TROLLEY TRAVELLING MOTOR POWER (kW)	BRIDGE TRAVELLING SPEED (m/min)	BRIDGE TRAVELLING MOTOR POWER (kW)	DYNAMIC TEST LOADING (kg)	STATIC TEST LOADING (kg)
1	6	1/2	0..3,7	1,1	261	615	13,0	0,57	25,0	2x0,57	1100	1250
2	6	1/2	0..5,5	2,2	261	615	13,0	0,57	25,0	2x0,57	2300	2500
5,2	8	1/2	0..3,7	5	261	615	13,0	0,55	25,0	2x0,55	5570	4100
5	12	1/2	0..4,6	4	561	616	13,0	0,75	25,0	2x0,75	5500	6500
6,5	12	1/2	0..4,9	5,5	561	618	13,0	0,75	25,0	2x0,75	6950	8100
8	12	1/2	0..4,0	5,5	961	617	13,0	0,75	25,0	2x1,1	3300	10400
10	14	1/2	0..4,0	5,5	561	616	13,0	1,1	25,0	2x1,1	11000	12900
12,5	14	1/2	0..4,0	11	261	615	13,0	1,1	25,0	2x1,1	15750	16250
16	16	1/2	0..5,9	11	961	617	13,0	1,5	25,0	2x1,5	17600	20300
20	18	1/2	0..4,2	15	561	618	13,0	2,2	25,0	2x1,5	22000	26900
25	22	1/2	0..4,1	13,5	561	616	13,0	2x1,1	20,0	2x2,2	27500	52500
52	22	1/2	0..5,2	13,5	961	617	13,0	2x1,5	25,0	2x2,2	55000	41600
40	24	1/2	0..2,3	22	261	615	13,0	2x2,2	25,0	2x5	44000	52000
50	26	1/2	0..5,0	30	261	615	13,0	2x2,2	25,0	2x5	55000	65000

**B SINGLE GIRDER**


CAPACITY (ton)	WIRE DIAMETER (mm)	ROPE REEVING	LIFTING SPEED (m/min)	LIFTING MOTOR POWER (kW)	FEM	D.O	TROLLEY TRAVELLING SPEED (m/min)	TROLLEY TRAVELLING MOTOR POWER (kW)	BRIDGE TRAVELLING SPEED (m/min)	BRIDGE TRAVELLING MOTOR POWER (kW)	DYNAMIC TEST LOADING (kg)	STATIC TEST LOADING (kg)
1	6	1/2	0..3,7	1,1	261	615	13,0	0,57	25,0	2x0,57	1100	1250
2	6	1/2	0..5,5	2,2	261	615	13,0	0,57	25,0	2x0,57	2300	2500
5,2	8	1/2	0..3,7	5	261	615	13,0	0,55	25,0	2x0,55	5570	4100
5	12	1/2	0..4,6	4	561	616	13,0	0,75	25,0	2x0,75	5500	6500
6,5	12	1/2	0..4,9	5,5	561	618	13,0	0,75	25,0	2x0,75	6950	8100
8	12	1/2	0..4,0	5,5	961	617	13,0	0,75	25,0	2x1,1	3300	10400
10	14	1/2	0..4,0	5,5	561	616	13,0	1,1	25,0	2x1,1	11000	12900
12,5	14	1/2	0..4,0	11	261	615	13,0	1,1	25,0	2x1,1	15750	16250
16	16	1/2	0..5,9	11	961	617	13,0	1,5	25,0	2x1,5	17600	20300
20	18	1/2	0..4,2	15	561	618	13,0	2,2	25,0	2x1,5	22000	26900

## 14 VACCUM GLASS LIFTER

### A X TYPE - VACCUM GLASS LIFTER

Time-saving, labor-saving, cost-saving, easy to use, no pollution; small and light-weight, single-person operation, non-destructive handling of workpieces, imported oil-free vacuum pump, no external power supply; ergonomic design, sound and light alarm system, energy storage device, safety High, long service life and other characteristics; cooperate with the crane to form a complete lifting and handling solution

Glass processing, glass loading and unloading, glass curtain walls, plastic plates, sandwich panels, composite panels, steel plates, aluminum plates, copper plates, stone, etc.; suitable for various types of workpieces with relatively flat and dense surfaces and relatively regular shapes



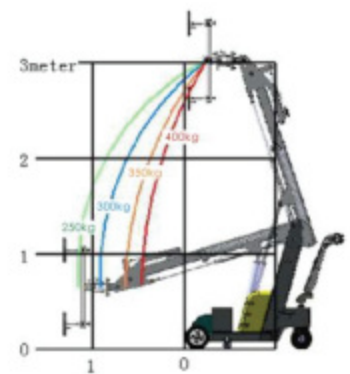
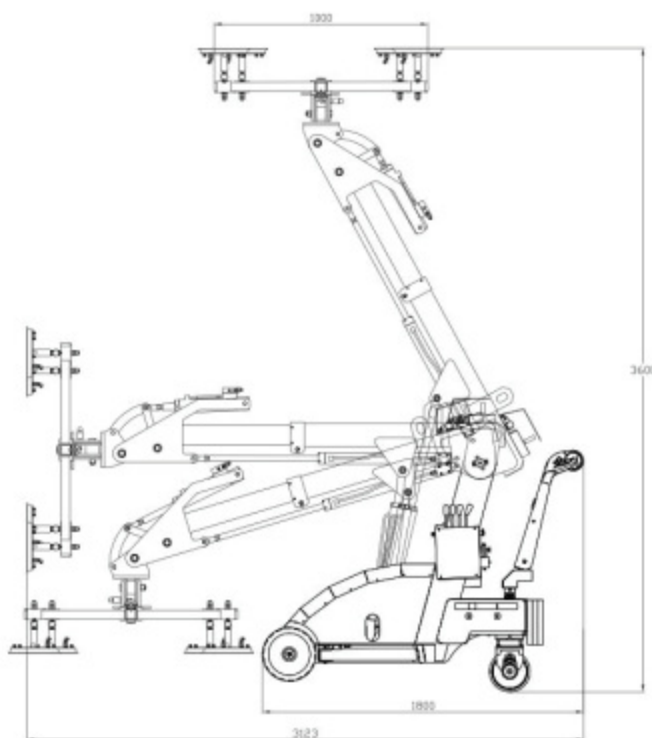
Lifting Capacity	kg	600	800	1000
Model	/	SSURY400	SSURY600	SSURY800
Cup Qty	/	6	8	10
Single Cup Size	mm	300	300	300
Single Cup Lifting Capacity	kg	100	100	100
Rotation	/	360° manual rotate		
Tilting	/	90° manual		
Volte	V	DC12		
Charger	V	AC220/110		
Weight	kg	90	100	110
Packing size	m	1.3*0.85*0.37 m	1.3*0.85*0.37 m	1.3*0.85*0.37 m
Extension Bar Length	mm	500		
Control System	/	Integrated Control Cabinet and Wired Remote Control		

**B MOBILE-SMART VACCUUM GLASS LIFTER**



**CAPACITY**  
**400 kg & 600 kg**  
**800 kg & 1000 kg**

WS-GR is designed as intelligent manipulator for glazing by DC battery powered, all functions controlled remotely by operator including moving, lifting, extending, tilting, side-moving, and vacuum switch, multiply application offered not only for panels installation on site, but for machine feeding or handling in workshop as well all movements could be achieved by hydraulic which offered steady working continuously special designed side moving unit offered fine positioning during glazing side-shift function helped the full-loaded machine easily come through narrow aisle and gates



## 15 CHUTE SYSTEM

### A GARBAGE & LAUNDRY CHUTE SYSTEM

BATCO Trash, Linen and Recycling Chutes are designed to provide a clean and efficient method of removing waste and soiled linens from upper floors to a centrally located discharge area on a lower floor. It is a very convenient, simple and low cost method of controlling and disposing of refuse and linen in multi-storey buildings.

Our chutes meet the most stringent requirements of environmental health and safety

The components of chute has interlocking system, cleaning system, sanitizing and disinfecting units, sound dampening and fire control equipment. Within the overall design of chutes have greatly increased their usage throughout the KINGDOM OF SAUDI ARABIA



### components of chute includes

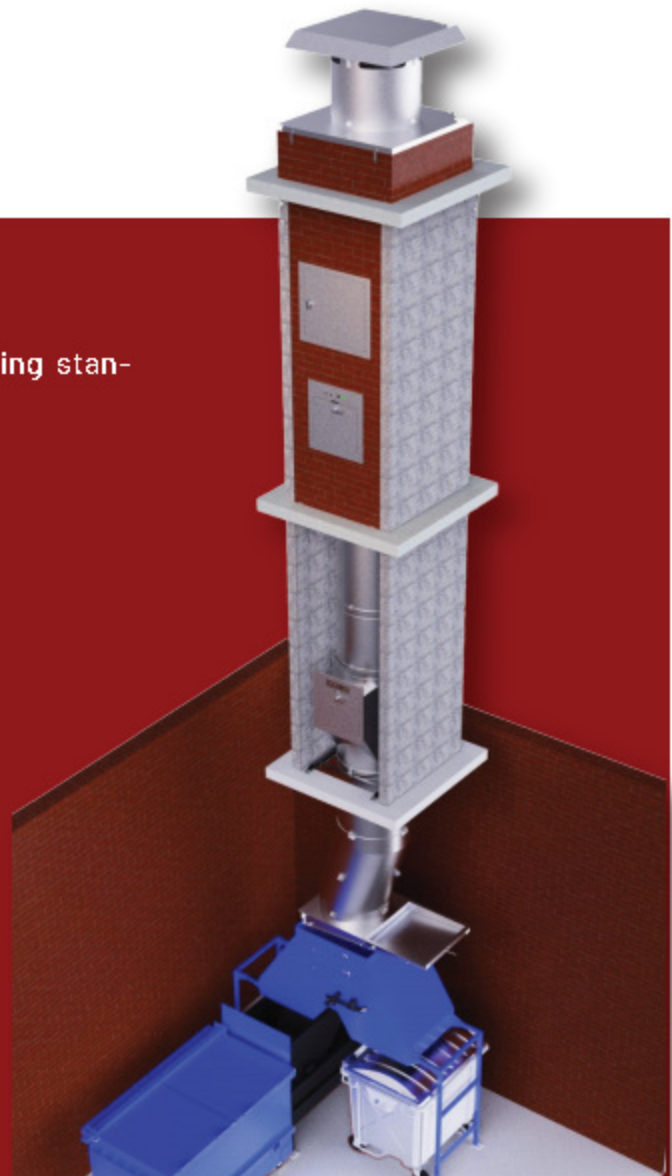
- Ventilation System
- Brushing System
- Sanitizing and disinfecting units
- Straight Chute Section
- Intake Chute Section
- Supporting Frame
- Sound Dampening System
- Intake Door
- Interlocking System
- Recycle chute system
- LCD Main Control Panel
- Sprinklers & Flushing System
- Fire Control System
- Offset Chute
- Discharge Door (Fire Cutoff Door) or Electrical Automatic Cutoff Door
- Compactor
- Bi-Sorter/Tri-sorter

## CHUTE SPECIFICATIONS:

Our chutes are available with the following standard internal diameters:

-  350mm
-  450mm
-  500mm
-  600mm
-  700mm
-  800mm
-  900mm
-  1000mm

Chutes are available in various diameters; We will also manufacture per customer's drawings and customer's special requirements



## MATERIAL SPECIFICATIONS:

We provides garbage chutes and laundry chutes to customer requirements from the following high quality materials: Stainless Steel 304, Stainless Steel 304, Galvanized Steel, Aluminum-coated steel, or per customer's request.

We strongly recommends the use of stainless steel 304, 316 for the manufacture of garbage chutes and linen chute. Stainless steel has the advantage of being resistant to the humidity, acid and alkalis contained within refuse. Stainless steel has no applied coating to wear off and most important has very high impact strength.

The following material thickness can be available:

-  1.5mm
-  2.0mm
-  3.0mm

**B CONSTRUCTION CHUTE**








Construction chutes are temporary installations used to remove rubble, debris, and similar demolition and construction waste materials safely from taller buildings without affecting loads on the structure. They are required to have a smooth, open shaft without offsets, bends or interior protrusions and are used in multistory buildings to convey construction waste from upper floors to a collection point

Our chutes are made of HDPE plastic and added with UV resistant material, which can be used outdoors for a long time, and our products can be used in extremely cold weather

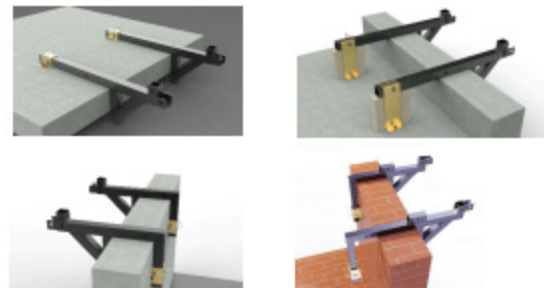
We manufacture the chute section by injection mold, wall thickness uniform, small deformation, wear resistance and impact resistance



**components of chute includes**

-  Regular Chute
-  Door Chute (Hopper Chute)
-  Chain Assembly
-  Supporting Bracket
-  Pulling hoist system(Fishing Pole)
-  Steel Liner
-  Dust Cover

**SUPPORTING BRACKET**



**Pulling Hoist System**



**C COMPACTOR & WASTE TROLLEY**



The Apartment Compactor is the Ideal Solution For:

- Small Apartment Buildings
- Hospitals
- Nursing Homes
- High-Rise Chute Rooms

Solid waste in your building has been brought down to street level with a dedicated waste chute and the compactor.

Standard Features and Benefits:

- 📖 4:1 compaction ratio over un-compacted waste receptacles
- 📖 Convenient single side ratchet.
- 📖 Push button controls mounted in the panel box face.
- 📖 Hopper with access door and interlock for hand feed or chute feed applications.
- 📖 Limited Space Applications - Compactor and container system can be easily operated
- 📖 Automatic photo-eye start system - compactor cycles automatically
- 📖 Large waste chute transition hopper standard. Allows for garbage to "hit" the spot with less mess around the compactor
- 📖 Reduce hauling costs - compacted wastes means fewer pickups

## 16 LED - FACADE LIGHTING



Facade lighting is the art of illumination that emphasizes the structure, texture, and form of the exterior of a building. It is used to create a visually pleasing exterior display that gives a building prominence and is also a way to communicate with the public.

BATCO has created a range of LED architectural lighting PIXELS specifically designed to meet the increasing demand for building and media facade lighting. These PIXELS provide aesthetic appeal, aiding in the illumination of retail spaces. Rayon's facade lighting solutions can create an awe-inspiring visual experience that unifies the space and draws people in



We have a team of creative lighting designer, engineers and technical staff equipped with technical knowledge and wealth experience to produce innovative products. We aim in executing projects that illustrate the client's requirement, combined with sophisticated technique that will ultimately industry.

If you need installation, supervision, and programming services for your media facade or facade lighting project in Saudi Arabia, we have a team of experts who can help. We can visit your site and take care of the entire process, from start to finish











## RANGE OF PRODUCTS:

	<b>DD-DG-20</b>	P13
	<b>DD-DG-30</b>	P15
	<b>DD-DG-50</b>	P17
	<b>DD-DG-60</b>	P19
	<b>DD-DG-16x60</b>	P21

**LED POINT LIGHTS**

	<b>DD-XT-18A</b>	P27
	<b>DD-XT-25A</b>	P29
	<b>DD-XT-40A</b>	P31
	<b>DD-DT-120</b>	POWER 3W, CRI 90
	<b>DD-DT-245</b>	POWER 6W
	<b>DD-DT-285</b>	POWER 6W, 30V

**LED LINER LIGHTS & FLOOD LIGHTS**



# Our Services

**01 MAINTENANCE SERVICE**

**02 EXTERNAL FACADE CLEANING**

**03 STEEL WORK- FABRICATION**

**04 LIFTING EQUIPMENT'S RENTAL**

**05 FACADE MAINTENANCE**

**06 TRAINING & CERTIFICATION**

**07 ACCESS ENGINEERING**

## 01 MAINTENANCE SERVICE



Service is a major part of our commitment to our clients. With a network of fully qualified engineers and parts we are ready to respond to the servicing requirements of your business.

BATCO warrants and maintains all products manufactured and installed by us. Our maintenance division is in the capacity to maintain all kinds of Façade Access Systems manufactured by any company.

Preventive maintenance: list of scheduled tasks and checks are applied in order to avoid immobilization as a consequence of a component failure.

BATCO Maintenance team members are well professional, highly skilled and specially trained on various kind of machines from different brands (BMU) available in the market. Wheter these brands or others:-



## 02 EXTERNAL FACADE CLEANING

Keep your windows clean. If you are looking for the best, then BATCO is the specialist cleaning company, with expertise in window cleaning and building washing and leaking test.

BATCO are not only for a window cleaning, we are the best company for window cleaning servicing for high rise building and small building, our client list includes them all. The numbers of clients we service is growing by the week, our client retention rate is 100% and were constantly being recommended by existing customers to new ones.!

BATCO is the perfect company as partner and to go with, we're able to provide a flexible service Cleaning by Facade Access System such as : roof car system, monorail system & Davit system and rope access teams.





**Cleaning by Facade Access System Such as: Roof Mounted Machine, Monorail System, Davit System, Cradles Man lifts & Gantry etc.**

BATCO can provide Cleaning Service with Highly Trained & Certified Operator of Building Existing Facade Cleaning System.

We know that the image of your business is important to you, as like ours is to us. We can support you to show your building the image to be clean and elegant. What we can handle: High Rise Tower, Offices, Showrooms, Banking, Supermarkets, Shopping Malls, Hotels, Restaurants, Schools, Universities, Hospitals, etc. Nothing is impossible.



### 03 STEEL WORK - FABRICATION



BATCO Provides Complete Design, Calculation Fabricate, Supply Delivery and Installation of All Kind of Structural Steel Such as on high rise buildings, Elevator, BMU Steel Support Structure, Tracks, Pipe Track & Platforms.



## 04 LIFTING EQUIPMENT'S RENTAL

BATCO Provides a comprehensive range of equipment on a rental basis as per the requirement of our clients. We have committed and dedicated professional staff to ensure outstanding services. Rental activities are part of business. We support numerous local projects that require rental equipment. Also at large construction sites.



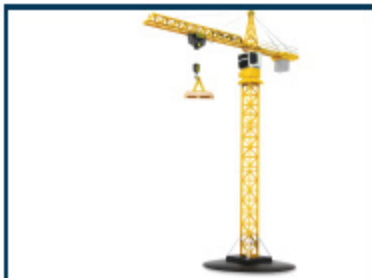
TEMPORARY SUSPENDED CRADLE



ELECTRICAL WINCH HOIST



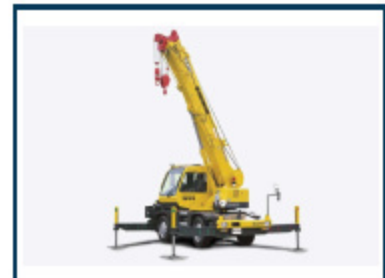
ELECTRICAL VACUUM GLASS LIFTER



TOWER CRANE



CONSTRUCTION HOIST



MOBILE CRANE



BOOM LIFT / MAN LIFT



SCISSOR LIFT



SPIDER LIFT



LIGHT TOWER



FORKLIFT



TELEHANDLER

## 05 FACADE MAINTENANCE

Facade Maintenance is one of our provided services. Our team of professionals can perform any task of Related to Façade Maintenance such as cladding, Glass, Silicon and Façade Lighting installation or replacement using different tools depending on location and the possible different needs.





## 06 TRAINING & CERTIFICATION



BATCO can provide BMU Operation training to cover operation of the machine and maintenance tasks. Once the training has been completed, BATCO will issue a certification stating who has carried out the training course

All the trainings are carried out by our team of experts, capable of communicating in different languages.



## 07 ACCESS ENGINEERING

Our engineering and rigging teams have been providing innovative access solutions for over 15 years. We are proud to have been involved in thousands of projects across the KSA covering a huge variety of structures. This is a testament to the knowledge and experience of our teams and the flexibility of the equipment we use.

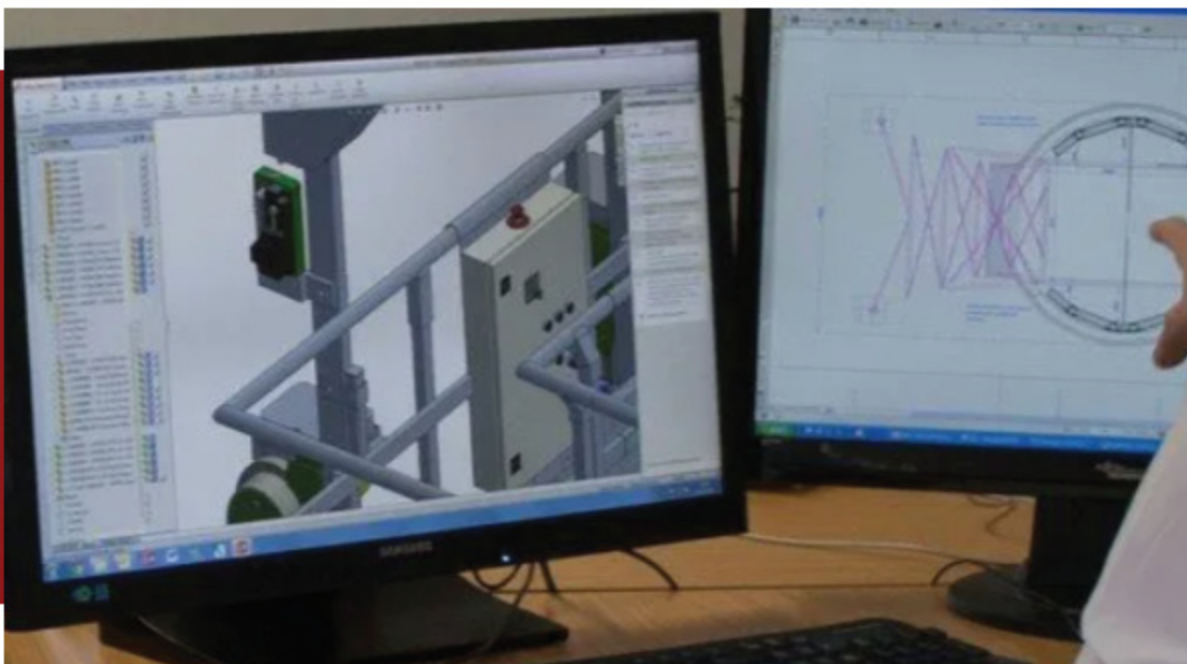


We specialise in solving challenging temporary and permanent access problems using innovation, experience and proven equipment



#### DESIGN SOLUTION

A well designed and engineered access solution will be safe, meet statutory requirements and be cost effective. Our graduate engineering team work closely with experienced rigging, maintenance and installation personnel to bring together many years of on-site experience with a high level of technical knowledge. Recruitment policies and a culture of continuous education ensure our engineers maintain technical knowledge and awareness of technology advances. With strong long term links to leading manufacturers, we have additional expertise and experience to draw from, to ensure the customer receives a suitable access solution.



# OUR PROJECTS



**JABAL OMER , MAKKAH**

SUPPLY & INSTALLATION BMU SYSTEM

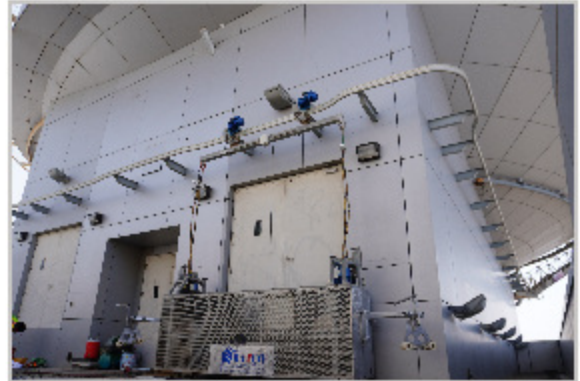
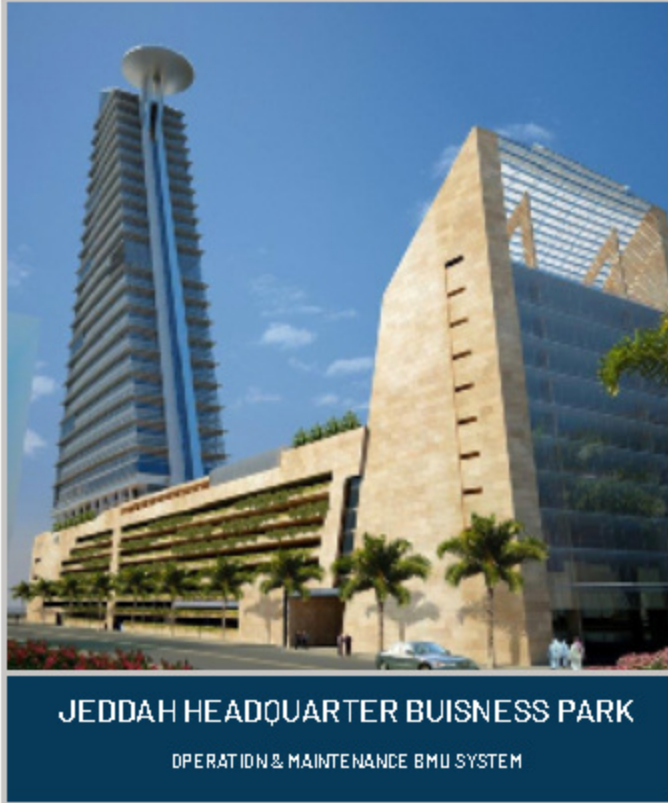


**BAYYAT PLAZA , JEDDAH**

SUPPLY & INSTALLATION BMU SYSTEM



## Continue - Our Projects



## Continue - Our Projects



## Continue - Our Projects



**ARAR WATER TANK**

TEMPORARY CRADLE SYSTEM FOR FACADE INSTALLATION

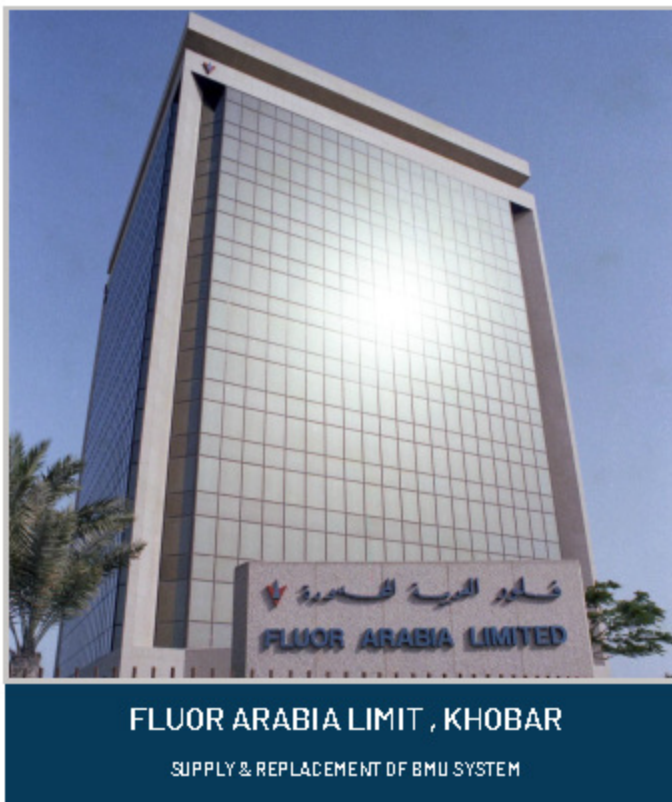


**KINGDOM TOWER , RIYADH**

MAINTENANCE BMU SYSTEM



**Continue - Our Projects**





## Continue - Our Projects



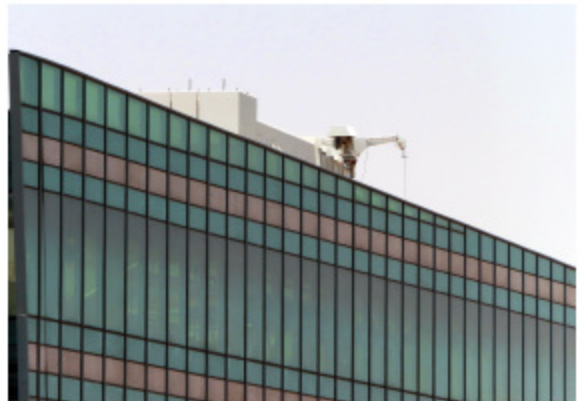
**KAFD PARCEL - 2.14**

TESTING COMMISSIONING & MAINTENANCE BMU SYSTEM



**KAFD PARCEL - 4.01**

TESTING COMMISSIONING & MAINTENANCE BMU SYSTEM



**Continue - Our Projects**



**KAFD PARCEL - 4.08**

TESTING COMMISSIONING & MAINTENANCE BMU SYSTEM



**KAFD PARCEL - 4.07**

TESTING COMMISSIONING & MAINTENANCE BMU SYSTEM



## Continue - Our Projects



### WADI LABAN BRIDGE

SUPPLY & REPLACEMENT OF ACCESS CRADLE SYSTEM



### JAZAN AIRPORT TRAFIC CONTROL TOWER

TEMPORARY CRADLE SYSTEM FOR FACADE INSTALLATION

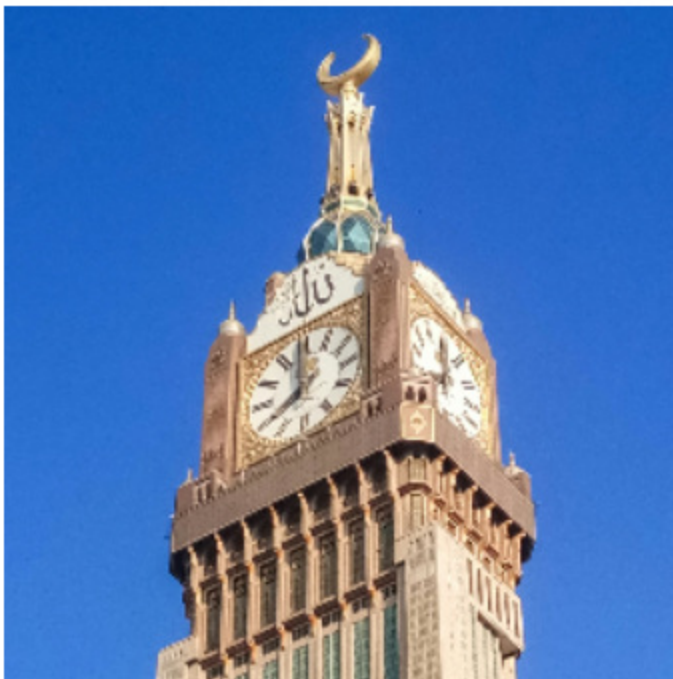


## Continue - Our Projects



**KAFD - TADAWAL**

TESTING COMMISSIONING & MAINTENANCE BMU SYSTEM



**CLOCK TOWER , MAKKAH**

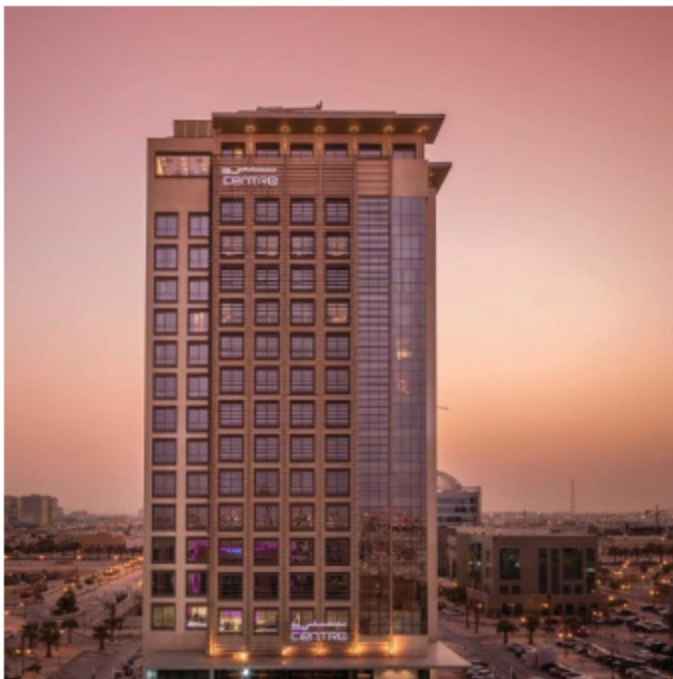
MAINTENANCE OF CLOCK MAINTENANCE CRANES



## Continue - Our Projects



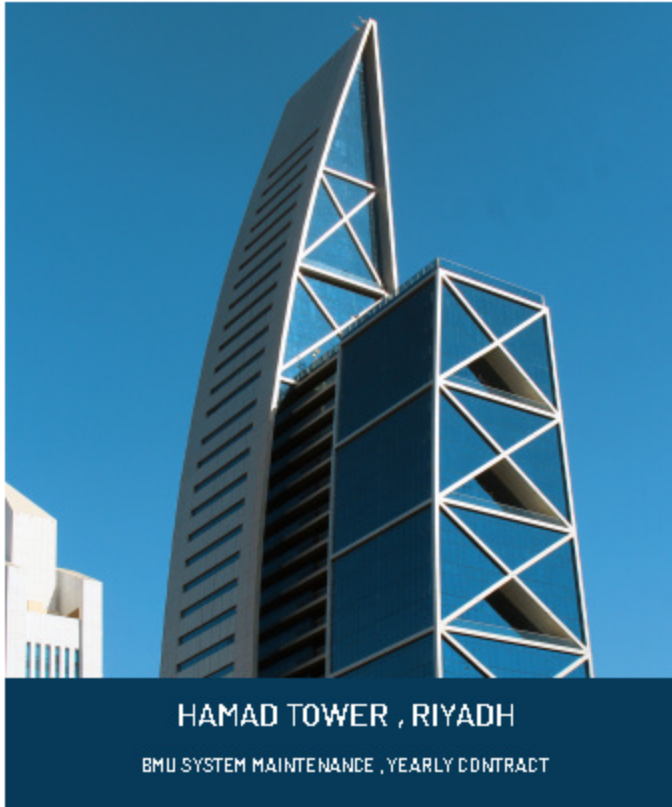
**DAR ALTAWHEED , MAKKAH**  
BMU SYSTEM MAINTENANCE , YEARLY CONTRACT



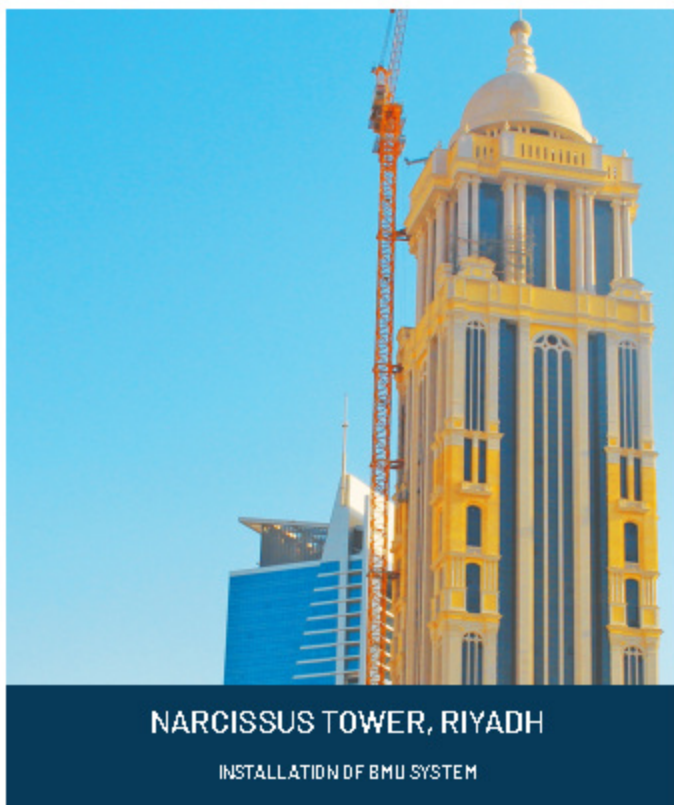
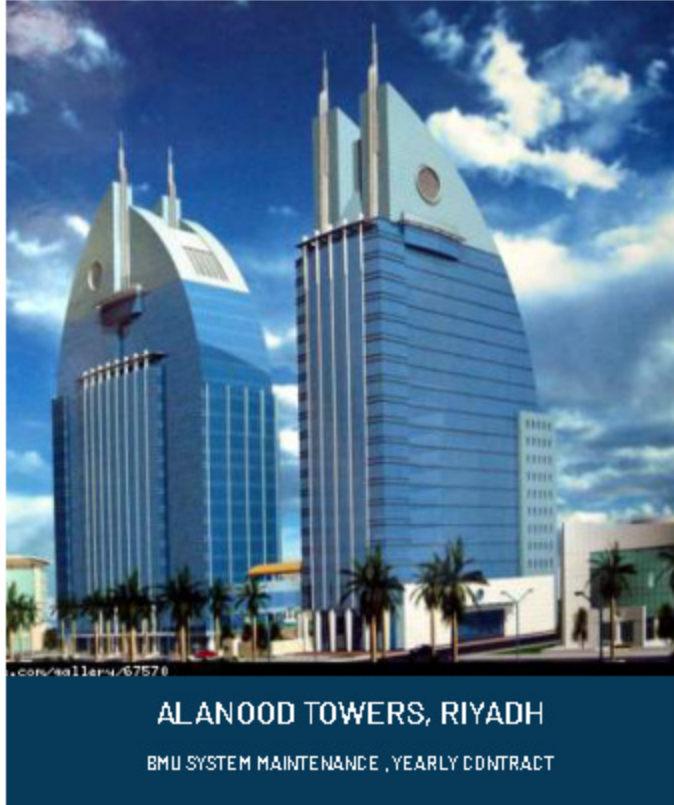
**CENTRO ALWAHA , RIYADH**  
BMU SYSTEM MAINTENANCE , YEARLY CONTRACT



**Continue - Our Projects**



## Continue - Our Projects



**Continue - Our Projects**



**5D BUSINESS PARK , DAMMAM**

SUPPLY & INSTALLATION BMU SYSTEM



**DYAR ALHARAM , MAKKAH**

SUPPLY & INSTALLATION BMU SYSTEM



**SABB TOWER HQ, RIYADH**

TESTING COMMISSIONING & MAINTENANCE BMU SYSTEM



**WATER PARK HOTEL , QIDDIYA**

SUPPLY & INSTALLATION BMU SYSTEM



**Continue - Our Projects**



**SAMEEM TOWER , RIYADH**

SUPPLY & INSTALLATION ABSEILING ROPE ACCESS SYSTEM



**JEDDAH YACHT CLUB**

ABSEILING ROPE ACCESS SYSTEM



**JAWAHRA TOWER , JEDDAH**

MAINTENANCE BMU SYSTEM



**DAMAC TOWER**

SUPPLY & INSTALLATION FACADE LIGHTINGS

**Continue - Our Projects**



**KAFD PARCEL 4.06**

MAINTENANCE BMU SYSTEM



**KAFD PARCEL - 2.08**

TEMPORARY CRADLE SYSTEM FOR FACADE INSTALLATION



**KAFD PARCEL - 3.10**

DISMANTLE TOWER CRANE



**KAFD - PARCEL 2.05**

TEMPORARY CRADLE SYSTEM FOR FACADE INSTALLATION

**Continue - Our Projects**



**SPECIALIZED HOSPITALS , RIYADH**

SUPPLY & REPLACEMENT OF BMU SYSTEM



**ALBAWANI BUILDING , RIYADH**

BMU SYSTEM MAINTENANCE , YEARLY CONTRACT



**MOON TOWER , RIYADH**

MAINTENANCE BMU SYSTEM



**CONFORT HOTEL , RIYADH**

BMU SYSTEM MAINTENANCE , YEARLY CONTRACT

## Continue - Our Projects



**MINIROTTY AUTHORITY RIYADH**  
SUPPLY & INSTALLATION MONDRAIL SYSTEM



**HEALTH HOLDING , RIYADH**  
SUPPLY & INSTALLATION MONDRAIL SYSTEM



**CALLAH HOSPITAL , RIYADH**  
SUPPLY & INSTALLATION MONDRAIL SYSTEM



**DORMERA HOTEL , RIYADH**  
SUPPLY & INSTALLATION MONDRAIL SYSTEM



**EBDAAT-1 , RIYADH**  
SUPPLY & INSTALLATION MONDRAIL SYSTEM



**EBDAAT-2 , RIYADH**  
SUPPLY & INSTALLATION MONDRAIL SYSTEM



**TOURISM AUTHORITY , RIYADH**  
SUPPLY & INSTALLATION MONDRAIL SYSTEM



**GRAND PLAZA , RIYADH**  
SUPPLY & INSTALLATION MONDRAIL SYSTEM



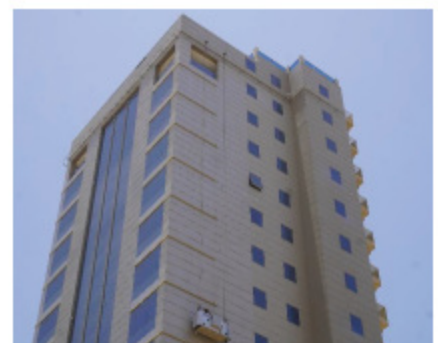
**JARIR REAL STATE , RIYADH**  
SUPPLY & INSTALLATION MONDRAIL SYSTEM



**MYRTLE HOTEL , RIYADH**  
SUPPLY & INSTALLATION MONDRAIL SYSTEM



**ROAD MINORATY AUTHORITY**  
SUPPLY & INSTALLATION MONDRAIL SYSTEM



**STELLA STAYS, RIYADH**  
SUPPLY & INSTALLATION MONDRAIL SYSTEM



**SMASCO TOWER ,RIYADH**  
SUPPLY & INSTALLATION MONDRAIL SYSTEM



**ALINMA-1, RIYADH**  
SUPPLY & INSTALLATION MONDRAIL SYSTEM



**VERONA , RIYADH**  
SUPPLY & INSTALLATION MONDRAIL SYSTEM



**ELITE HOTEL , RIYADH**  
SUPPLY & INSTALLATION MONDRAIL SYSTEM



**EBDAAT-3**  
SUPPLY & INSTALLATION MONDRAIL SYSTEM



**EMAAR AL MADEN-5**  
SUPPLY & INSTALLATION MONDRAIL SYSTEM



**ALINMA-2 ,RIYADH**  
SUPPLY & INSTALLATION MONDRAIL SYSTEM



**AL RABIA, RIYADH**  
SUPPLY & INSTALLATION MONDRAIL SYSTEM



**8 BUILDINGS , MAKKAH**  
SUPPLY & INSTALLATION MONDRAIL SYSTEM



**ALESAYI PLAZA, JEDDAH**  
SUPPLY & INSTALLATION MONDRAIL SYSTEM



**ALJOAIB BUILDING**  
SUPPLY & INSTALLATION MONDRAIL SYSTEM



**TAWHEED TOWER ,JEDDAH**  
SUPPLY & INSTALLATION MONDRAIL SYSTEM

## Continue - Our Projects



**ASCOTT ,KHOBAR**

SUPPLY & INSTALLATION MONORAIL SYSTEM



**BANK ALJAZIRA, RIYADH**

SUPPLY & INSTALLATION MONORAIL SYSTEM



**HERFY TOWER, RIYADH**

SUPPLY & INSTALLATION MONORAIL SYSTEM



**CRYSTAL TOWER, JEDDAH**

SUPPLY & INSTALLATION MONORAIL SYSTEM



**NABEELA TOWER**

SUPPLY & INSTALLATION MONORAIL SYSTEM



**QUITE DREAMS, JEDDAH**

SUPPLY & INSTALLATION MONORAIL SYSTEM



**ROSE HOTEL ,RIYADH**

SUPPLY & INSTALLATION MONORAIL SYSTEM



**UNITED DOCTOR HOSPITAL**

SUPPLY & INSTALLATION MONORAIL SYSTEM



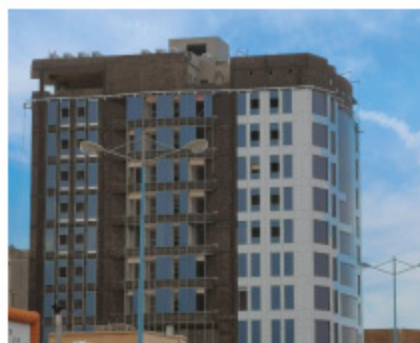
**ZAKHIR CITY, MAKKAH**

SUPPLY & INSTALLATION MONORAIL SYSTEM



**COURTYA MARRIOTT, MAKKAH**

SUPPLY & INSTALLATION MONORAIL SYSTEM



**HOTEL, HAFAR ALBATAN**

SUPPLY & INSTALLATION MONORAIL SYSTEM



**DALLAH HOSPITAL, RIYADH**

SUPPLY & INSTALLATION MONORAIL SYSTEM



**FOUAD ALKHATEEB**

SUPPLY & INSTALLATION MONDRAIL SYSTEM



**KACST , RIYADH**

SUPPLY & INSTALLATION MONDRAIL SYSTEM



**SAUDI AIRLINE HQ, JEDDAH**

SUPPLY & INSTALLATION MONDRAIL SYSTEM



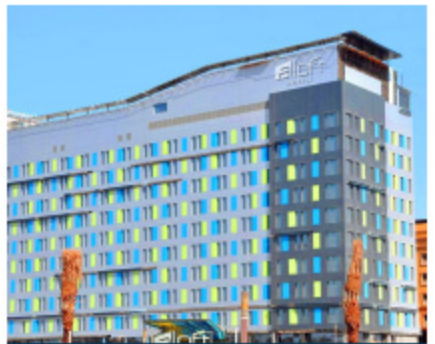
**KISWA TOWERS, MAKKAH**

MAINTENANCE MONDRAIL SYSTEM



**ALOFT HOTEL, RIYADH**

MAINTENANCE BMU SYSTEM



**ALOFT HOTEL , DHAHRAN**

MAINTENANCE BMU SYSTEM



**CY MARRIOTT , RIYADH**

MAINTENANCE MONDRAIL SYSTEM



**ALAWWAL BANK, KHOBAR**

MAINTENANCE MONDRAIL SYSTEM



**SAMA HQ, RIYADH**

MAINTENANCE BMU SYSTEM



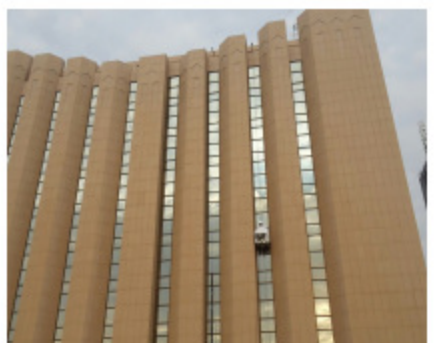
**LE MERRIDIEN , RIYADH**

MAINTENANCE BMU SYSTEM



**SMART TOWER**

MAINTENANCE BMU SYSTEM



**SAUDI FRANSI BANK**

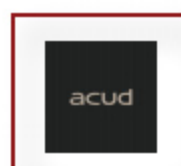
MAINTENANCE BMU SYSTEM

# Our Clients





**Continue - Our Clients**



# Letters from Clients

الرقم /  
 التاريخ  
 التاريخ  
 سبتمبر 2016 (1438هـ)


  
 المملكة العربية السعودية  
 وزارة التخطيط  
 (1438)  
 وكالة وزارة التخطيط للتطوير الإنمائي  
 مقر الشؤون الإدارية / مدينة الرياض

**شهادة إنجاز**

تشهد وكالة وزارة الداخلية للتخطيط والتطوير الأمني بأن مؤسسة مهدي صالح بن  
 عاطف للتجارة (باتكو) قد قامت بتنفيذ جميع الأعمال الموكدة التي من خلال توريد وتركيب  
 سلة نوع SKY CLIMBER بلجميكي المصنع وتوريد عدد 5 ترولي لنظام تنظيف الواجهات  
 الزجاجية .  
 وقد اعطيت هذه الشهادة بناء على طلبه دون ادنى مسؤولية .

والله ولي التوفيق  
 مدير إدارة الشؤون الإدارية  
 / المعتمد  
 جهاد بن محمد الرشيد




  
 سامسونج - سي سي إي جي آي  
 SAMSUNG - CCE JV  
 P.O. Box 56532, Riyadh 11564  
 Tel : +966 1 201 2777  
 Fax : +966 1 201 0891  
 Date: 10 August 2016

**Certificate for successful completion of work**

**To whom it may concern**

We confirmed that we contracted with Mahdi Saleh Bin Atif Est. (BATCO) for  
 Supply & Installation of Hanging System & Monorail System for Al-Rajhi Bank HQ  
 towers the project duration was one and a half year starting 10 February 2015.

BATCO has designed and installed the system effectively and delivered on time.

We can confidently recommend BATCO as a solid and reliable supplier and expert  
 in their field.

This certificate is issued according to the Mahdi Saleh Bin Atif Est. (BATCO) request  
 without any responsibility.

  
 Hee-Seok Kim  
 Commercial and Project Controls Manager  
 For and on behalf of Samsung - CCE JV




  
 البواني  
 AL BAWANI

**شهادة لإتمام العمل بنجاح**

اسم المشروع : مركز الملك عبدالله المالي - برج 4.01 و برج 2.14 .  
 اسم الشركة : شركة البواني المحدودة .

هذه شهادة بأن شركة مهدي صالح بن عاطف (باتكو) ، قد أكملت أعمال صيانة وإعادة لهيئة ماكينة BMU  
 نوع MANNTTECH ، قد أوفت بجميع الالتزامات بكفاءة ، ووفقاً لتداول الزمن المحدد لها بطريقة  
 مرضية وسنخضع الشكر في مشروع مركز الملك عبدالله المالي لبرج 4.01 و برج 2.14 .  
 وقد منحت هذه الشهادة بناء على طلبها ودون أدنى مسؤولية علينا .

**Certificate for successful completion of work**

Project name: KING ABDULLAH FINANCIAL DISTRICT- PARCEL 4.01 and 2.14.  
 Company name: - AL BAWANI CO. LTD

This is certifying that BATCO Mahdi Saleh bin Atif completed the maintenance  
 of BMU Roof car – Make&Model Manntech, and fulfilled all the commitments  
 efficiently and in accordance with the schedule set for them in a satisfactory  
 manner and deserve the thanks in the project, KAFD PARCEL 4.01 and 2.14.

This certificate issuing according request without any responsibility.

  
 Eng. Thomas Habes  
 Project Controls Manager  
 10/8/2016


  
 الديوان العام للمحاسبة  
 General Court of Audit

**شهادة إنجاز وشكر**

اسم المشروع :- الديوان العام للمحاسبة .  
 بهذا يشهد الديوان العام للمحاسبة بأن مؤسسة مهدي صالح سالم بن عاطف للتجارة (باتكو)  
 قد قامت بأعمال الصيانة الدورية لمكبينة تنظيف الواجهات الزجاجية إماراتية الصنع وبشهود  
 الديوان بأن مؤسسة مهدي صالح سالم بن عاطف (باتكو) قد أوفت بكفاءة بالالتزامات الخاصة  
 بكفاءة ووفقاً لتداول الزمن المحدد لها وبصفة مرضية وستنحى عليها الشكر والتقدير .  
 وقد اعطيت هذه الشهادة بناءً على طلبها ودون أدنى مسؤولية علينا .  
 والله ولي التوفيق ...

**Certificate for successful completion of work**

Project name :- GENERAL COURT OF AUDIT .

This is testifying that General Court of Audit that Mahdi Saleh bin Atif  
 (BATCO) completed the preventive maintenance and inspection for BMU Roof  
 Car Machine Made in UAE and testifying that General court of Audit that  
 Mahdi Saleh bin Atif has fulfilled all of the commitments efficiently and in  
 accordance with the schedule set for them in satisfactory manner and in  
 deserve the thanks.

This certificate issuing according to Mahdi Saleh bin Atif EST(BATCO) request

  
 الديوان العام للمحاسبة  
 الديوان العام للمحاسبة

## Continue - Letters from Clients



**أوقاف محمد العلي الصالح**  
Mohamed Al-Ali Alsanie Endowment

شهادة إنجاز وشكر

**اسم العميل :- أوقاف مجد العلي الصالح .**

**اسم المشروع :- مشروع برج فراند تاور - الرياض طريق الملك فهد.**

هذه شهادة بأن مؤسسة مهدي صالح سالم بن عاتق للتجارة ( بانكو ) قد قامت بأعمال نظافة الواجهات الخارجية وصيانة مكان تنظيف الواجهات الخارجية في فندق حيا ريجنسي وقد أوفت بكافة التزاماتها الخاصة بكفاءة ووفقاً للجدول الزمنية المحددة لها وبصفة مرضية وتسلمت عليها الشكر والتقدير ، وقد أعطيت هذه الشهادة بناء على طلبها ودون أدنى مسؤولية علينا.

والله ولي التوفيق...

**Certificate for successful completion of work**

**Client name: - Mohamed Al-Ali Alsanie Endowment.**

**Project name: - Grand Tower Project – Riyadh king Fahad Road.**

This is certifying that Mahdi Saleh bin Atif (BATCO) completed the External Façade Cleaning and preventive maintenance and Inspection for BMU Roof Car Machine in Grand Tower Project and fulfilled all of the commitments efficiently and in accordance with the schedule set for them in a satisfactory manner and deserve the thanks.

This certification issuing according to Mahdi Saleh Bin Atif EST (BATCO) request without any responsibility.



Mohamed Al-Ali alsanie Endowment  
أوقاف محمد العلي الصالح  
Riyadh - Saudi Arabia  
11564



حياة ريجنسي الرياض العليا  
**HYATT REGENCY**  
Riyadh, Saudi Arabia

**لتدق حياة ريجنسي الرياض العليا**

هذه شهادة بأن مؤسسة مهدي صالح سالم بن عاتق للتجارة ( بانكو ) قد قامت بأعمال نظافة الواجهات الخارجية وصيانة مكان تنظيف الواجهات الخارجية في فندق حيا ريجنسي وقد أوفت بكافة التزاماتها الخاصة بكفاءة ووفقاً للجدول الزمنية المحددة له وبصفة مرضية وتسلمت عليها الشكر والتقدير .

وقد أعطيت هذه الشهادة بناء على طلبها ودون أدنى مسؤولية علينا .

والله ولي التوفيق ...

This is certifying that Mahdi Saleh bin Atif (BATCO) completed the External Façade Cleaning and preventive maintenance and Inspection for BMU Roof Car Machine in Hyatt Regency Hotel and fulfilled all of the commitments efficiently and in accordance with the schedule set for them in a satisfactory manner and deserve the thanks.

This certificate issuing according to Mahdi Saleh Bin Atif EST (BATCO) request without any responsibility might fall on the hotel.

**Director Of Engineering**  
Mohamed Eldeeb

HYATT REGENCY RIYADH CLAIN  
فندق حياة ريجنسي الرياض العليا

P.O. Box 32341 Riyadh 11432  
Riyadh - Saudi Arabia  
T: +966 11 288 1222  
F: +966 11 288 1222  
www.hyatt.com

محمد بن عبد الله بن عبد العزيز  
King Fahd International Airport  
P.O. Box 10000 Riyadh 11452  
T: +966 11 488 1122  
F: +966 11 488 1122



وزارة الإسكان والتخطيط  
للخدمات العمرانية  
والبلدية

السادة / مؤسسة مهدي صالح سالم بن عاتق للتجارة ( بانكو )  
المخبرين

الموضوع / شهادة إنجاز

اسم العميل / وزارة الحج والعمرة

الجهة: الإدارة العامة للمشايخ والتشغيل والسماحة

اسم المشروع / تحديث وتطوير الواجهات التمازي 1 و 2 و 6 بالمقر الدائم للوزارة بمنطقة المكرمة - العمراء

لتشهد إدارة المشايخ بوزارة الحج والعمرة بأن مؤسسة مهدي صالح سالم بن عاتق للتجارة ( بانكو ) قد قامت بأعمال تركيب مكان تنظيف الواجهات الخارجية من نوع سكاى كلنير بصيكية الصبغ في مشروع مبنى وزارة الحج والعمرة بمنطقة المكرمة في العمراء وأن مؤسسة مهدي صالح سالم بن عاتق ( بانكو ) قد أوفت بكافة التزاماتها الخاصة بكفاءة وبصفة مرضية وتسلمت عليها الشكر والتقدير .

وقد أعطيت هذه الشهادة بناء على طلبها ودون أدنى مسؤولية.

والله ولي التوفيق ...

وتسليماً نصيباً



مدير إدارة المشايخ  
م. محمد بن علي بن إبراهيم  
٩١-٤٤٤-٩١



**ALFARAA' ARABIA**  
Contracting Company

Date: 17-09-2017

**Project Name:- Classic Project \* Necessia Hotel Riyadh \***

**Consultant :- Abdul - Al - Muhana Engineering Consulting**

**Main contractor:- Al Far'a Arabia Contracting Co.**

**Sub Contractor:- Mahdi Saleh Bin Atif Est. (BATCO)**

**Subject:- Installation Building Maintenance Unit.**

We would like to congratulate you and your team for an excellent job on the Design, and installation of the window cleaning system for the Classic Project.

We appreciate your punctuality and capacity to fulfill your obligations, your ability to anticipate and mitigate risks along with your professional support which resulted in achieving the project goals on time.

We would certainly recommend you to our management for any future dealings.

Sincerely,  
Eng. Ahmed Karrar  
Al Far'a Arabia Contracting Co  
General Manager



# Exhibitions



**Saudi Build  
2019**

**Saudi Build  
2017**



# Our Team





## GET IN TOUCH



info@batcosa.com  
www.batcosa.com



Head Office, Riyadh - Saudi Arabia  
Branch Office, Jeddah - Saudi Arabia  
Branch Office, Dammam - Saudi Arabia



+966 (0) 11 217 0127

رؤية  
2030  
المملكة العربية السعودية  
KINGDOM OF SAUDI ARABIA

